


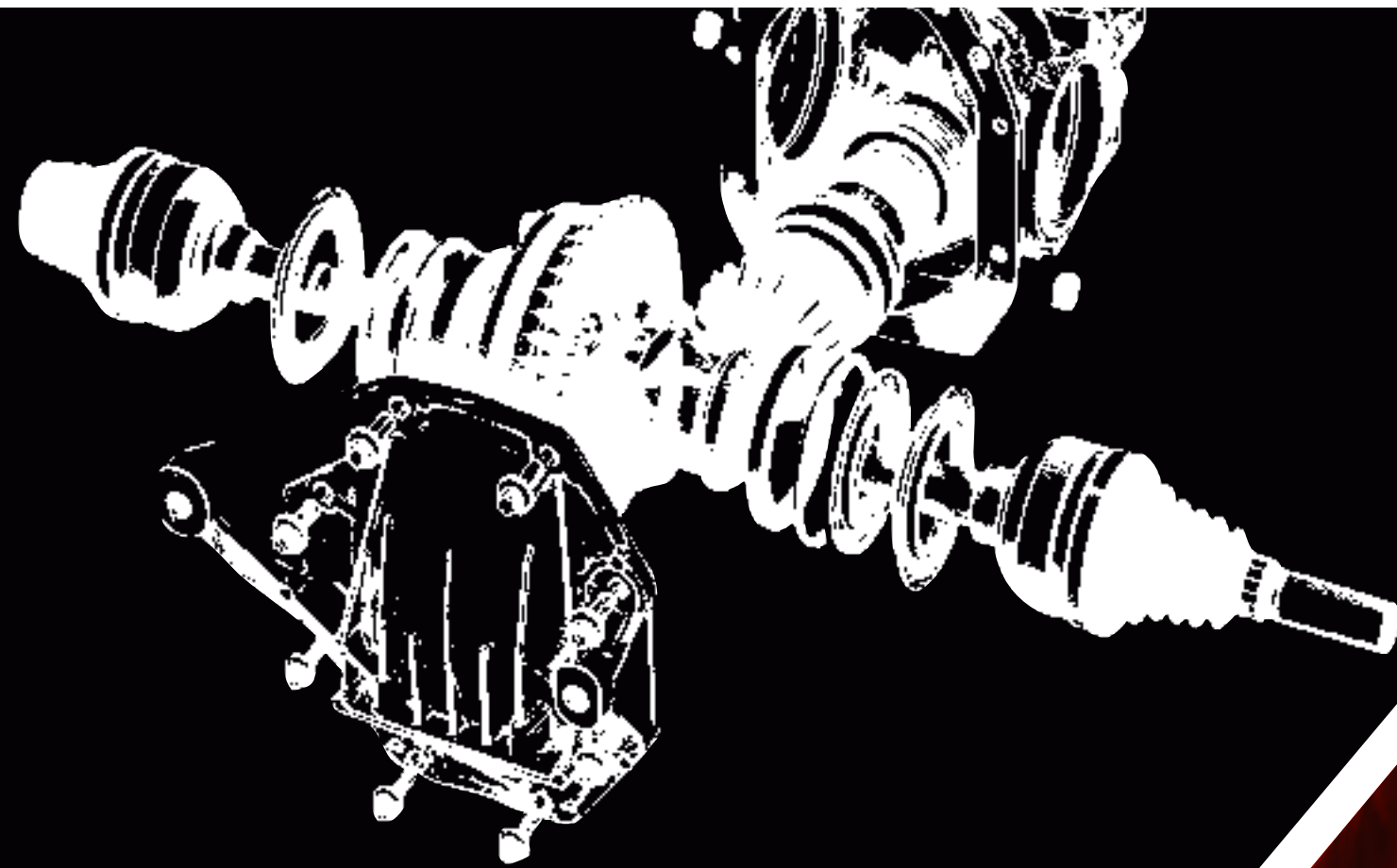
dodge.com / 800-4ADODGE / 2010 CHARGER





Combine legendary HEMI® power, fuel-saving MDS technology,<sup>[1]</sup> and sport-car handling with four-door flexibility, and you end up with a driving experience that only Dodge Charger can deliver. This finely-tuned piece of modern muscle offers formidable engine choices mated to equally capable transmissions, bold styling, and tech-savvy features that make every ride even more enjoyable. For more info, hightail it to [dodge.com/charger](http://dodge.com/charger) [1]EPA est. 16 city/25 hwy. mpg with MDS.





**CHARGER SRT8®** / This performance warrior is powered by the Hemi Orange-clad 425-horsepower 6.1-liter SRT® HEMI® V8 engine, and tamed by Brembo® Performance four piston brake calipers and unique Electronic Stability Control calibration, performance-tuned steering, and high-performance suspension. SRT8 sits on 20-inch SRT forged aluminum wheels fitted with P245/45R20 all-season performance tires. The front fascia features integrated brakes ducts for increased cooling and brake performance, while the hood sports a functional hood scoop.

**6.1-Liter SRT HEMI V8.** The high-performance 6.1-liter SRT HEMI V8 pumps out an awesome 425 horsepower and 420 lb-ft of torque. It was developed by increasing the bore of each cylinder, increasing compression ratio, redesigning the intake and exhaust systems for better airflow, and increasing engine speed.





**POWERFUL PRESENCE** / Just below the long, wide hood, Charger's front end is dominated by the signature Dodge grille and aggressive, intimidating headlamps. Unique styling cues feature distinctive side glass and a sloping fastback roofline, with the beltline kicking up over the rear-wheel arches, creating a muscular shoulder over the wheel well. Charger R/T is grounded by 18-inch ultra-brite aluminum wheels that are pushed to the corners for a strong stance, reducing front and rear overhangs to enhance vehicle stability and ride quality. Dual bright exhaust tips on Charger R/T and SRT8® give this powerhouse a menacing look even from behind.



**INTERIOR ACCENTS**

Bright chrome and Satin Silver accents highlight Charger's sophisticated cockpit. Deep-tunneled Viper-inspired gauges with available silver rings warm the cockpit at night with a blue/green glow. Available steering wheel-mounted controls let you keep your hands on the wheel as you access song selection, radio tuning, and volume. Fine-tune seating comfort with available eight-way power-adjustable driver and front-passenger seats as well as available heated seats. Durable padding adds comfort with upscale French seams to the armrests and center console. Available 60/40 split-folding rear seats accommodate larger loads. The rear seats welcome combined loads. You can lower the second row completely for long or bulky items.







**ALL-WHEEL DRIVE WITH AUTOMATIC DISCONNECT** / This exclusive feature on every Charger with all-wheel drive (AWD) supplies power to both axles, delivering excellent balance for improved control under difficult road conditions. The system seamlessly transitions between rear-wheel drive and AWD with no driver intervention. When AWD is not required, the system automatically disconnects the front axle and opens the transfer case from the drivetrain to reduce friction and rotational mass. The system provides optimal traction, performance, and an improvement in fuel economy.<sup>[1]</sup>

Only Chrysler Group LLC offers these two independent technologies together. <sup>[1]</sup>Based on EPA est. 16 city/23 hwy and a combined 19 mpg.





Charger Rallye shown with Custom Chrome Grille Insert and Lower Front Fascia Air Dam, Authentic Dodge Accessories by Mopar.

**iPOD® INTERFACE MODULE.**

This FM-bound adapter allows you to play your music by using your iPod click wheel and to listen through the vehicle's speakers.

Available as an Authentic Dodge Accessory by Mopar.





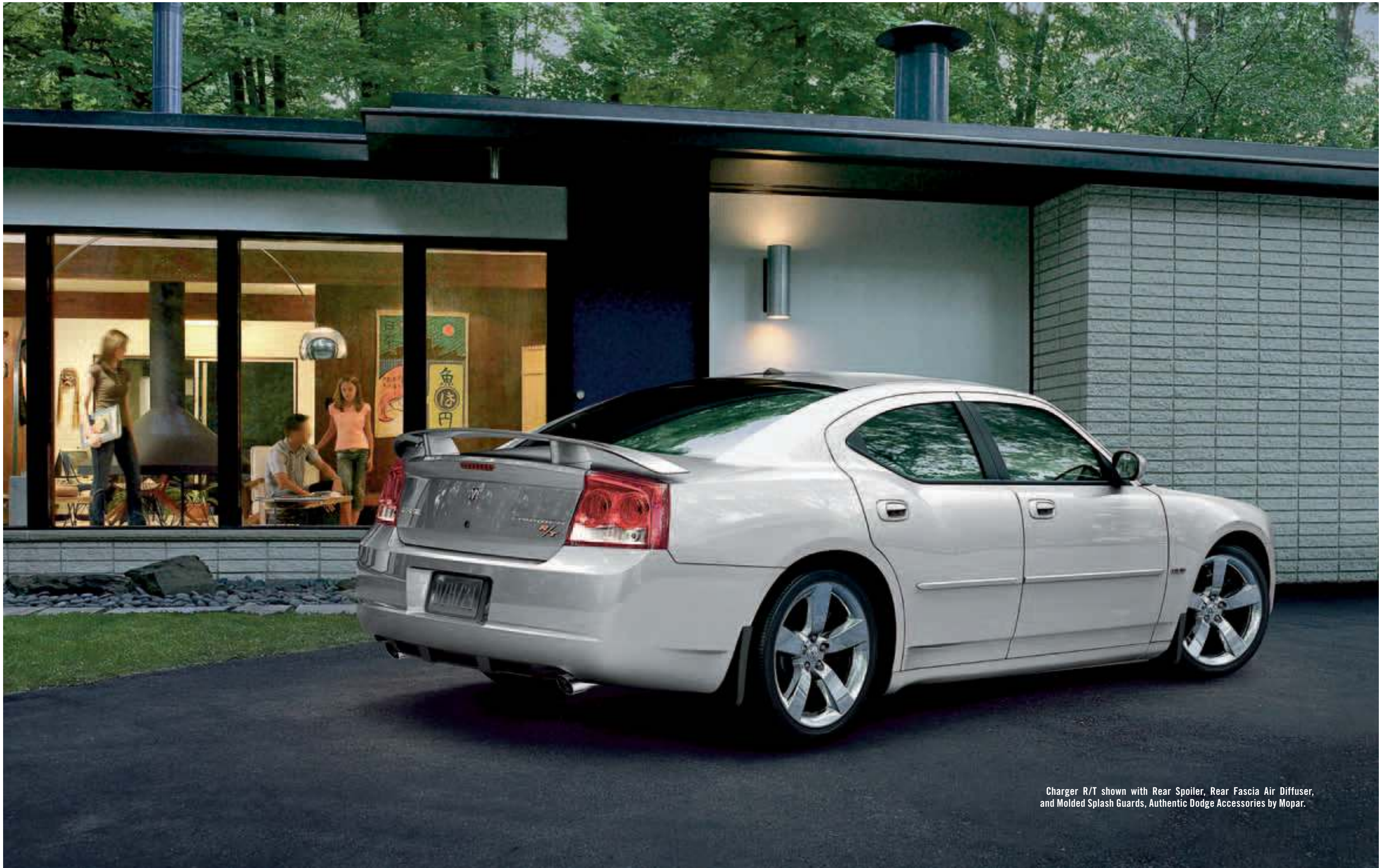
**Media Center.** 730N AM/FM/CD/DVD<sup>[1]</sup> radio with 30GB hard drive, GPS Navigation 6.5-inch touch screen, MP3/WMA support, USB input, 4,250 song capacity, SIRIUS® Satellite Radio, SIRIUS Traffic™ and Voice Command. **iPod® Control.** Connect most iPod compatible devices to your car's stereo using the in-car cable, then control them with your radio or steering wheel controls. Keeps the devices charged too. **Uconnect™ Web.**<sup>[2]</sup> An in-car router connects any Wi-Fi-enabled device to the Internet at 3G broadband speeds, allowing multiple passengers to surf the Web, social networks, look up directions, check eMail or download music. Uconnect Web is an Authentic Dodge Accessory by Mopar. Subscription required, sold separately. **Voice Command.** Lets you select radio stations, satellite radio channels,<sup>[3]</sup> and navigation<sup>[3]</sup> destinations using voice commands. Works with all Uconnect Media Center radios. Included with Uconnect Phone. **Uconnect Phone.** Lets you talk on your Bluetooth® compatible phone virtually hands-free. Address Sync<sup>[4]</sup> lets you call anyone in your address book by saying their name.

<sup>[1]</sup>In-dash DVD capability not available in all states. See your dealer for details. <sup>[2]</sup>The Uconnect Web feature is not intended for use by the driver while the vehicle is in motion. <sup>[3]</sup>When satellite radio and navigation features are equipped

on your vehicle. Any voice-commanded system should be used only in safe driving conditions and all attention should be kept on the roadway ahead. Failure to do so may result in an accident causing serious injury or death.

<sup>[4]</sup>Phone must support Bluetooth Phone Book Access Profile (PBAP).

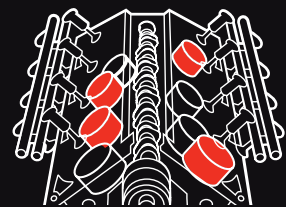




Charger R/T shown with Rear Spoiler, Rear Fascia Air Diffuser, and Molded Splash Guards, Authentic Dodge Accessories by Mopar.



**5.7L HEMI® V8**



The 5.7-liter HEMI® with Variable Valve Timing (VVT) V8 Multi-Displacement System (MDS) brings fuel economy<sup>[1]</sup> to HEMI power. MDS allows the 5.7-liter HEMI VVT V8 engine with MDS — sporting best-in-class<sup>[2]</sup> 368 horsepower and 395

lb-ft of torque — to operate with the fuel efficiency of only four cylinders as needed, for improved fuel economy.<sup>[1]</sup> The HEMI engine is a marvel

of modern engineering, thanks to its advanced electronics that allow the HEMI cylinder deactivation system to switch from eight cylinders to four.

The engine idles on eight cylinders for maximum smoothness, uses all eight for acceleration and heavy loads, and seamlessly transitions to four cylinders based on torque requirements, even at interstate highway speeds.



**3.5L SOHC V6**

The formidable 3.5-liter High Output V6 engine, with its refined dual-tuned intake manifold, brings 250 horsepower and 250 lb-ft of torque to the table. Platinum-tip spark plugs allow for 100,000-mile scheduled tune-up intervals.

<sup>[1]</sup> EPA est. 16 city/25 hwy mpg with MDS. <sup>[2]</sup>Based on 2009 *Ward's* segmentation.



**ADVANCED MULTISTAGE FRONT AIR BAGS.**<sup>[1]</sup> Advanced multistage front air bags deploy in staged amounts, depending on impact severity, to help provide even better protection, while standard front and rear supplemental side-curtain air bags<sup>[1]</sup> help protect front and rear outboard occupants.

**CRUSH ZONES.** No one wants to test a vehicle's impact resistance, but Charger is ready if it occurs. The front structure is composed of crush zones: the area in front of the engine; the engine, transmission, and driveshaft; and the area between the engine and the instrument panel. Together, if these zones crush, they are designed to absorb impact energy and direct it away from the passenger compartment.

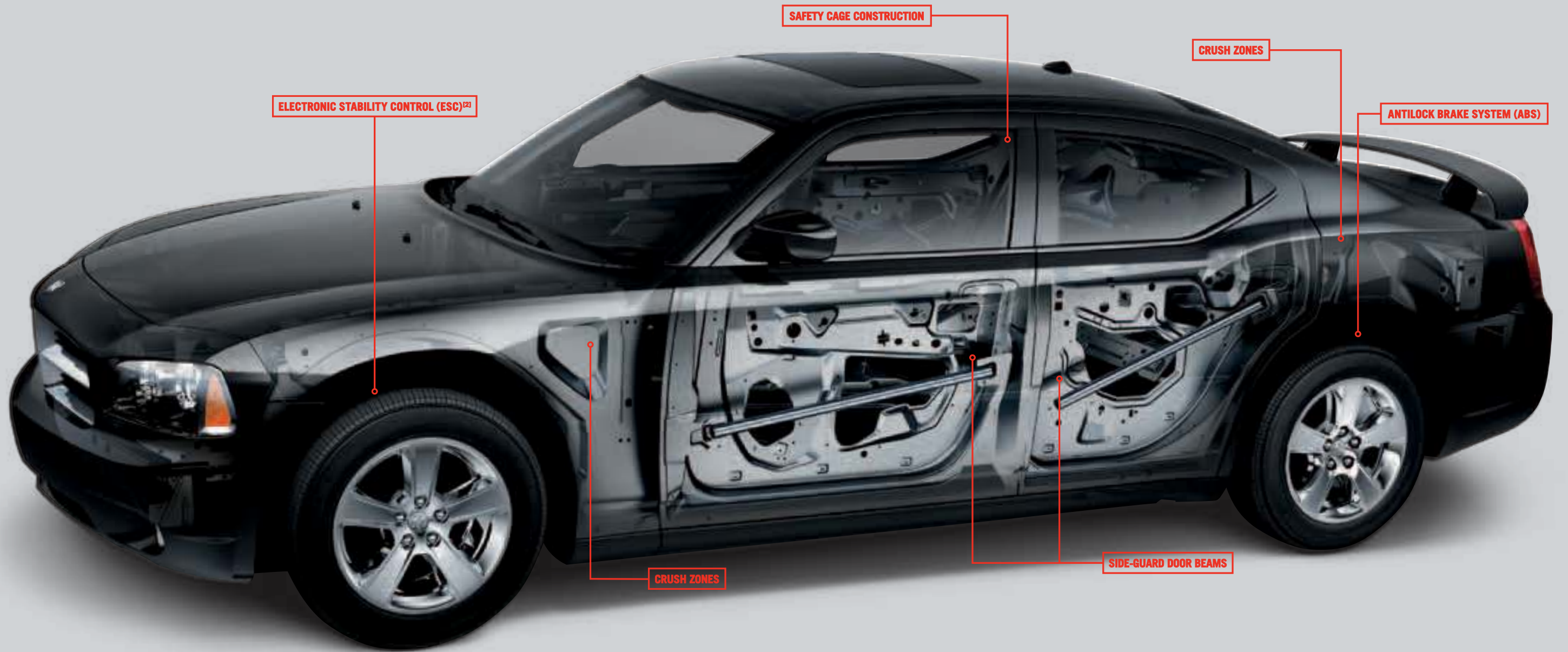
**ELECTRONIC STABILITY CONTROL (ESC).**<sup>[2]</sup> In adverse conditions, the available Electronic Stability Control with Brake Assist works with an advanced all-speed traction control system to help the driver maintain vehicle directional stability, and it limits oversteering or understeering. Brake Assist detects conditions when maximum force is needed for optimum stopping power.

**ANTILOCK BRAKE SYSTEM (ABS).** Charger features 4-wheel disc brakes with an available antilock brake system. Besides affording premium stopping power, it enhances mobility and directional stability by allowing the driver to steer the vehicle while braking.

**FIVE-STAR.** Dodge Charger has earned Five-Star crash test ratings for both front and side impacts. These ratings represent the highest possible vehicle safety honors from the National Highway Traffic Safety Administration (NHTSA). Star ratings are part of the U.S. Department of Transportation's SaferCar.gov program (safercar.gov).

<sup>[1]</sup>The Advanced Front Air Bags in this vehicle are certified to the new U.S. federal regulations for advanced air bags. Children 12 years old and younger should always ride buckled up in a rear seat. Infants in rear-facing child restraints should never ride in the front seat of a vehicle with a passenger front air bag. All occupants should always wear their lap and shoulder belts properly. <sup>[2]</sup> No system, no matter how sophisticated, can repeal the laws of physics or overcome careless driving actions. Performance is limited by available traction, which snow, ice and other conditions can affect. When the ESC warning lamp flashes, the driver needs to use less throttle and adapt speed and driving behavior to prevailing road conditions. Always drive carefully, consistent with conditions. Always wear your seat belt. <sup>[3]</sup> Star ratings are part of the National Highway Traffic Safety Administration's (NHTSA) New Car assessment program (www.safercar.gov).

★ ★ ★ ★ ★ | HIGHEST GOVERNMENT<sup>[3]</sup>  
**FIVE-STAR** | FRONT & SIDE CRASH RATING



ELECTRONIC STABILITY CONTROL (ESC) [2]

SAFETY CAGE CONSTRUCTION

CRUSH ZONES

ANTILOCK BRAKE SYSTEM (ABS)

CRUSH ZONES

SIDE-GUARD DOOR BEAMS





**EXTERIOR MEASUREMENTS (in.):**

OVERALL LENGTH	200.1
OVERALL WIDTH	74.5
OVERALL HEIGHT	58.2
WHEELBASE	120.0



# SRT8<sup>®</sup>

Includes the 6.1-liter SRT<sup>®</sup> HEMI<sup>®</sup> V8 engine with Hemi Orange engine block, Brembo<sup>®</sup> Performance four-piston brake calipers, performance bolstered leather-trimmed seats, SRT unique calibration Electronic Stability Control (ESC), performance-tuned steering, high-performance lowered suspension, functional hood scoop, front fascia with integrated brake ducts, and 20-inch forged aluminum wheels.



R/T

R/T with Road & Track Performance Package

# R/T

Includes the 5.7-liter Variable Valve Timing (VVT) HEMI V8 with MDS engine, 5-speed AutoStick<sup>®</sup> transmission, ABS, ESC with all-speed traction control, power driver and passenger heated leather-trimmed seats, leather-trimmed steering wheel with audio controls and shift knob, power adjustable pedals, vehicle information center, and 18-inch aluminum wheels and a rear spoiler.



# RALLYE

Includes 3.5-liter V6 engine, a touring suspension with rear stabilizer bar, fog lamps, heated exterior mirrors, and power adjustable pedals, 18-inch painted aluminum wheels, 60/40 split-folding rear seatback with center armrest, eight-way power-adjustable driver's seat, SIRIUS<sup>®</sup> Satellite Radio and more. The Rallye also gets as standard equipment a rear spoiler.



# CHARGER 3.5L

Includes 3.5-liter V6 engine, 4-wheel disc ABS, ESC with all-speed traction control, heated exterior power mirrors, power windows and locks, speed control, Sentry Key<sup>®</sup> antitheft engine immobilizer, and Tire Pressure Monitoring System. Also gets illuminated front cup holders, Media Center 130 AM/FM/CD radio and SIRIUS Satellite Radio.

**17-inch painted aluminum wheel**  
*(standard on SE and Charger 3.5 RWD)*



**18-inch ultra-brite painted aluminum wheel**  
*(standard on Rallye and R/T RWD)*



**18-inch chrome-clad aluminum wheel**  
*(standard on Rallye Popular Equipment Group and R/T Popular Equipment Group)*



**18-inch painted-face aluminum wheel**  
*(standard on AWD)*



**20-inch chrome-clad aluminum wheel**  
*(standard on R/T with Road/Track Performance, available on Rallye and R/T)*



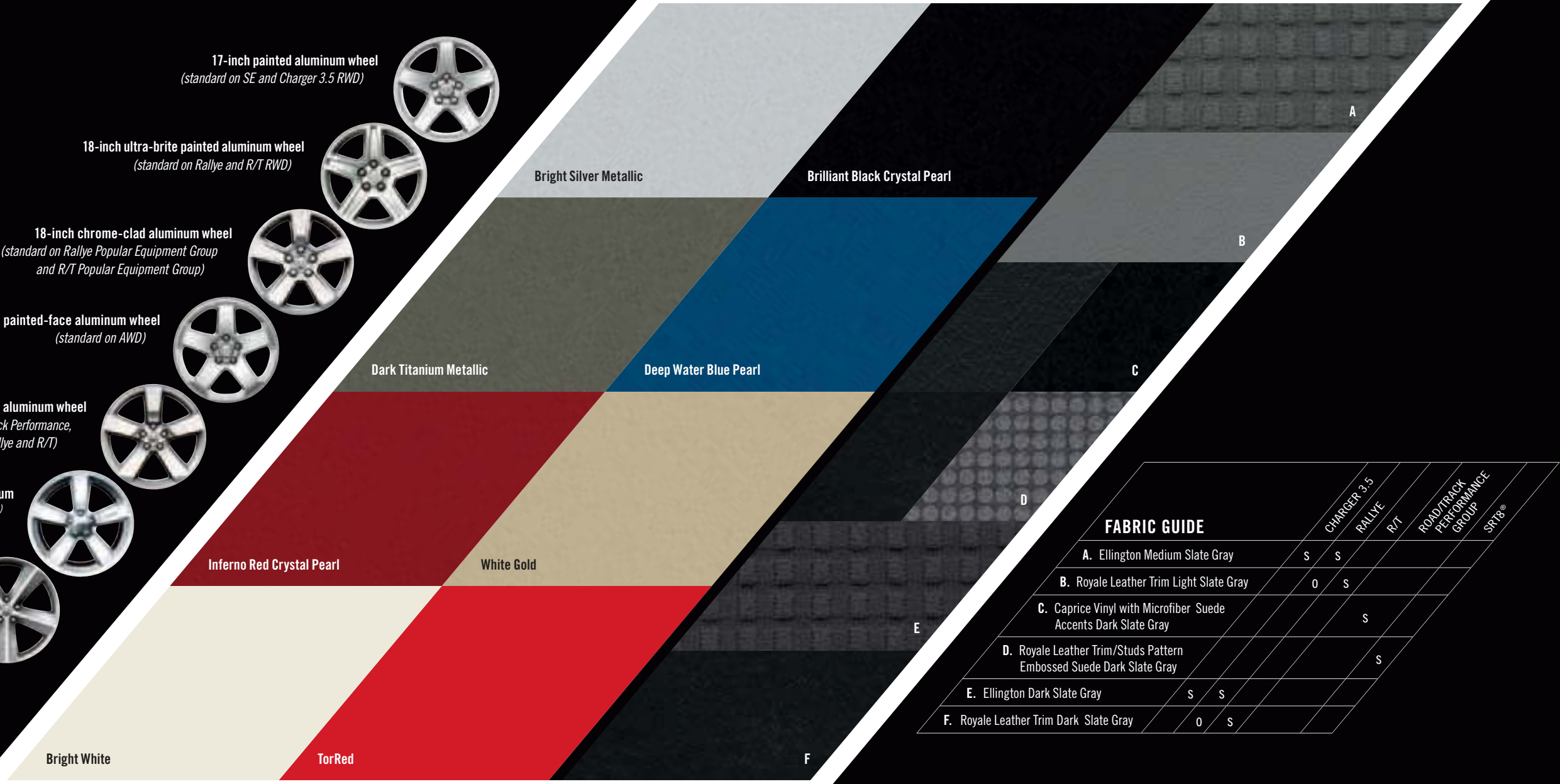
**20-inch SRT® forged, polished aluminum**  
*(standard on SRT8®)*



**20-inch polished aluminum wheel**  
*(optional on SRT8)*



**18-inch 5-spoke painted brite face, Black-pocket cast aluminum**  
*(Authentic Dodge Accessory)*



**FABRIC GUIDE**

	CHARGER 3.5	RALLYE	R/T	ROAD/TRACK PERFORMANCE GROUP	SRT8®
A. Ellington Medium Slate Gray	S	S			
B. Royale Leather Trim Light Slate Gray	O	S			
C. Caprice Vinyl with Microfiber Suede Accents Dark Slate Gray			S		
D. Royale Leather Trim/Studs Pattern Embossed Suede Dark Slate Gray			S		
E. Ellington Dark Slate Gray	S	S			
F. Royale Leather Trim Dark Slate Gray	O	S			

**FEATURES COMMON ACROSS ALL TRIM LEVELS**

AIR BAGS <sup>(1)</sup> — Advanced multistage driver and front-passenger
AIR FILTRATION — Particulate air filter
ANTENNA — Located in back glass
BATTERY — 730-amp, maintenance free
BATTERY-SAVER FEATURE — Enhanced, programmable to turn headlamps and other switched and non-switched interior lamps off after ignition is turned off
CHILD SEAT ANCHOR SYSTEM (LATCH) — Mounts for two child seats in the back seat help ease the installation of compatible aftermarket child seats
CONSOLE — Floor, with illuminated cup holders, coin holder, CD and cell phone storage with 12V power outlet, and rear-seat heat and A/C outlets
DEFROSTER — Rear window
DOOR HANDLES — Body-color, handle-style
DOOR LOCKS — Power, speed-sensitive — Rear doors, child protection
EMERGENCY TRUNK LID RELEASE
FLOOR COVERING — Carpet
FLOOR MATS — Premium front and rear (CLZ)
GLASS — Solar-Control, all windows
HEADLAMPS — Black bezel halogen with delay
HORN — Electric dual-note
LIGHTING — Dual front map, glove box and rear reading with theater-dimming — Rear reading/courtesy, trunk flood lamp — Illuminated front cup holders
MANUAL DRIVER/PASSENGER ADJUSTABLE LUMBAR
MIRRORS, EXTERIOR — Power foldaway, body-color
MIRRORS, INTERIOR — Rearview, day/night
PASSENGER ASSIST HANDLES
POWER ACCESSORY — 12V power outlet located in center console
REMOTE KEYLESS/ILLUMINATED ENTRY SYSTEM — Includes 2 transmitters
SEAT BELTS — Height-adjustable 3-point driver and front-passenger with traveling buckles and seat belt pretensioners; 3-point lap/shoulder belts at all rear-seat positions
SENTRY KEY® — Antitheft engine immobilizer
SPEED CONTROL — Electronic with steering column-mounted controls
STEERING COLUMN — Tilt/telescoping, manual
TIP START SYSTEM
TIRE PRESSURE MONITORING SYSTEM
TRUNK LID RELEASE — Power
WIPERS — Variable Intermittent

• = Included. P = Available within package noted. 0 = Optional.

**ENGINE AND TRANSMISSION**

	SE	3.5L	RALLYE	R/T	SRTB®
2.7L DOHC 24V V6 4-Speed Automatic	23C				
3.5L SOHC High Output 24V V6 4-Speed Automatic 5-Speed AutoStick® with AWD Models		26B 27B	26D 27U		
5.7L VVT with Multi-Displacement System V8 5-Speed AutoStick				28M 28W 29Y	
6.1L SOHC SRT® HEMI® V8 5-Speed AutoStick					21X

**MECHANICAL**

	SE	3.5L	RALLYE	R/T	SRTB®
Active transfer case with front axle disconnect (AWD models only)		•	•	•	•
BRAKES — 4-wheel disc with vented front and solid rear discs	•				
— 4-wheel disc antilock with vented front and solid rear discs (Included With ESC)		•	•		
— Performance 4-wheel disc antilock with vented front and rear discs (Included with AWD)		P	P	•	•
— High Performance 4-wheel disc antilock with vented 14" front and 13.8" rear discs, includes Brembo® Performance 4-piston calipers					•
ELECTRONIC STABILITY CONTROL <sup>(2)</sup> — Includes Brake Assist and all-speed traction control	0	•	•	•	•
ENGINE BLOCK HEATER	0	0	0	0	0
REMOTE START SYSTEM				•	•
STEERING — Power, rack and pinion	•	•	•	•	•
— Performance 9-land gearing					•
— Performance-tuned					•
SUSPENSION — Independent front and rear	•	•			
— Touring independent front and rear, rear stabilizer bar			•	•	•
— Performance independent front and load-leveling rear with height control					•
— High-performance lowered independent front and rear					•

**EXTERIOR FEATURES**

	SE	3.5L	RALLYE	R/T	SRTB®
GRILLE — Black with bright surround	•	•	•	•	•
— Black honeycomb with black surround					•
— Black honeycomb with body-color surround					•
HEADLAMPS — Black bezel Xenon High Intensity Discharge with delay (AWD on 29N)(Included with SRT Option Group and Premium Appearance Group)				P	P
— Automatic				•	•
— Fog lamps		•	•	•	•
MOLDING — Bodyside body-color		•	•	•	•
SUNROOF — Power, with one-touch open/close feature		0	0	0	0
SPOILER — Front fascia					•
— Rear trunk lid body-color			•	•	•
TIRES — P215/65R17 BSW All-Season Touring	•	•			
— P225/60R18 BSW All-Season Touring (Included with AWD)		P	•	•	•
— P245/45ZR20 All-Season Performance					•
— P245/45ZR20 Performance (included in Super Track Pak)				0	
— P245/45ZR20 and 255/45ZR20 Performance					0
— Compact spare tire	•	•	•	•	•
TIRE SERVICE KIT					•

**EXTERIOR FEATURES (CONT.)**

	SE	3.5L	RALLYE	R/T	SRTB®
WHEELS — 17" aluminum, painted (WF4)	•	•			
— 18" aluminum (WPB)			•	•	
— 18" aluminum, chrome-clad (WPL)			•	•	
— 18" painted aluminum (WPD)(Included with AWD)	•	•	•	•	
— 20" aluminum chrome-clad (WP2)			0	0	•
— 20" aluminum SRT design (WPQ)					•
— 20" aluminum SRT design (WP3)					0
WINDOWS — Power with driver's one-touch auto-up/down and antipinch feature	•	•			
— Power with driver's and front-passenger one-touch auto-up/down, and antipinch feature			•	•	•

**INTERIOR FEATURES**

	SE	3.5L	RALLYE	R/T	SRTB®
ADJUSTABLE PEDALS — Power adjustable			•	•	•
AIR CONDITIONING — Manual temperature control	•	•			
— Automatic Dual-Zone Temperature Control			•	•	•
ELECTRONIC VEHICLE INFORMATION CENTER (EVIC) — Reconfigurable driver-interactive information display with steering wheel-mounted controls				•	•
HOMELINK® UNIVERSAL TRANSCEIVER — Programmable, 3-function remote for garage door, home lighting, or security devices				•	•
ILLUMINATED FRONT AND REAR MAP POCKETS			•	•	•
INTERIOR ACCENTS — Silver trim includes interior door pull handles, instrument panel and shift knob	•	•	•	•	•
— Graphite patterns					•
MIRRORS, INTERIOR					
— Rearview, auto-dimming with microphone (included with Uconnect™ Phone and Media Center 730N)				•	•
— Visor vanity, passenger side	•	•	•		
— Visor vanity, illuminated driver and passenger side				•	•
PERFORMANCE DISPLAY — Includes digital speedometer, 1/8- and 1/4-mile time and speed, braking distance, 0-60 mph time and G-forces meter longitudinal and lateral (Included in SRT Option Group II)					P
SHIFT KNOB — Urethane with chrome accent	•	•	•		
— Leather-wrapped			•	•	•
STEERING WHEEL — Urethane	•	•	•		
— Leather-wrapped			•	•	•
— Steering wheel-mounted audio and EVIC controls				•	•

UCONNECT™ MULTIMEDIA	SE	3.5L	RALLYE	R/T	SRT8®
MEDIA CENTER RADIOS — Media Center 130 AM/FM/CD radio with MP3/WMA support, audio jack, and SIRIUS® Satellite Radio	•	•	•	•	•
— Media Center 430 AM/FM radio with MP3/WMA support, 30GB hard drive with 6,700 song capacity, CD/DVD player, 6.5-inch touch screen, SIRIUS Satellite Radio, audio jack, iPod® control, and Voice Command when equipped with optional Uconnect Phone			0	•	•
— Media Center 730N AM/FM/CD/DVD <sup>(3)</sup> radio with MP3/WMA support, 6.5-inch touch screen, 30GB hard drive with 4,250 song capacity, SIRIUS Satellite Radio, audio jack, iPod control, Voice Command, GPS Navigation, SIRIUS Traffic™ and Uconnect Phone (included in SRT Option Group III)			0	0	0
AUDIO SYSTEMS — 4 speakers	•	•	•		
— 6 Boston Acoustics® speakers with 276-watt digital amplifier			•	•	•
— 7 Boston Acoustics speakers with 368-watt digital amplifier and subwoofer and Matrix Surround System				•	•
— SRT® High-Performance KICKER® Sound System with 13 speakers (8 locations), a 322-watt digital amplifier and 200-watt subwoofer amplifier (included with SRT Option Group II)					P
iPOD® CONTROL (Included with Media Center 430 and 730N Radios and Uconnect Phone)	P	P	P	P	P
SIRIUS SATELLITE RADIO	0	•	•	•	•
UCONNECT WEB <sup>(4)</sup> — Internet connection and Wi-Fi HotSpot, Authentic Dodge Accessory by Mopar. Subscription required, sold separately	0	0	0	0	0
UCONNECT PHONE — Includes hands-free calling with Address Sync, Bluetooth®, Voice Command (included with Media Center 730N)	0/P	0/P	•	•	•

### SEATING AND TRIM

SEATS, FRONT — Cloth-trimmed	SE	3.5L	RALLYE	R/T	SRT8®
— Leather-trimmed			•	•	•
— Performance seats with perforated suede					•
— Performance seats with leather trim and stud-pattern embossed suede					•
— Manual adjustable driver and front passenger seats	•				
— 8-way power driver's seat		•	•		
— 8-way power driver's and front-passenger seat			•	•	•
— Heated front seats			•	•	•
REAR — 60/40 split-folding rear bench	SE	3.5L	RALLYE	R/T	SRT8®
— Rear bench with center armrest and two cup holders	•	•			

### SAFETY AND SECURITY

SAFETY AND SECURITY	SE	3.5L	RALLYE	R/T	SRT8®
SECURITY ALARM (included in SRT Option Group II)				•	•
PACKAGES	SE	3.5L	RALLYE	R/T	SRT8®
SUPER TRACK PAK — Includes high-performance 4-wheel disc antilock brakes, high-performance front and rear suspension with Bilstein® Monotube shocks, 3.06 axle ratio, and P245/45ZR20 BSW three-season performance tires					0
PREMIUM APPEARANCE GROUP — Includes High intensity discharge headlamps and 20-inch Aluminum Chrome Clad wheels			0	0	
ROAD/TRACK PERFORMANCE GROUP — Includes performance seats with Preferred Suede® inserts, black grille with Black honeycomb insert, R/T badge, front fascia spoiler, rear body-color spoiler, high-speed engine controller, performance steering, leather-wrapped steering wheel, performance suspension, rear performance-tuned shock absorbers, P245/45R20 BSW performance tires and 20-inch aluminum chrome-clad wheels					•
SRT OPTION GROUP II — Includes Performance display, security alarm, SRT high-performance KICKER Sound System with 13 speakers (8 locations), a 322-watt digital amplifier and 200-watt subwoofer amplifier, Media Center 430 AM/FM/CD/DVD radio with MP3/WMA support, 6.5-inch touch screen, 30GB hard drive with 6,700 song capacity, SIRIUS Satellite Radio, audio jack and Voice Command of radio and satellite stations when equipped with optional Uconnect Phone					0
SRT OPTION GROUP III — Media Center 730N AM/FM/CD/DVD radio with MP3/WMA support, 6.5-inch touch screen, GPS Navigation, 30GB hard drive with 4,250 song capacity, SIRIUS Satellite Radio, audio jack, Voice Command					0
SUN AND SOUND GROUP — Includes sunroof, leather-wrapped steering wheel with mounted audio controls, Media Center 430 AM/FM/CD/DVD radio with MP3/WMA support, 6.5-inch touch screen, 30GB hard drive with 6,250 song capacity, SIRIUS Satellite Radio, audio jack, Voice Command, SIRIUS Traffic and Uconnect Phone, 6 Boston Acoustics speakers and a 276 watt amplifier		0			

<sup>(1)</sup>The Advanced Front Air Bags in this vehicle are certified to the new U.S. federal regulations for advanced air bags. Children 12 years old and younger should always ride buckled up in a rear seat. Infants in rear-facing child restraints should never ride in the front seat of a vehicle with a passenger front air bag. All occupants should always wear their lap and shoulder belts properly. <sup>(2)</sup>No system, no matter how sophisticated, can repeal the laws of physics or overcome careless driving actions. Performance is limited by available traction, which snow, ice and other conditions can affect. When the ESC warning lamp flashes, the driver needs to use less throttle and adapt speed and driving behavior to prevailing road conditions. Always drive carefully, consistent with conditions. Always wear your seat belt. <sup>(3)</sup>In-dash DVD capability not available in all states. See your dealer for details. <sup>(4)</sup>The Uconnect Web feature is not intended for use by the driver while the vehicle is in motion.

About this catalog: Since the time of printing, some of the information you'll find in this catalog may have been updated. Ask your dealer for details. Some of the equipment shown or described throughout this catalog is available at extra cost. Specifications, descriptions, illustrative materials, and all competitive comparisons contained herein are as accurate as known at the time this publication was approved for printing. Chrysler Group LLC reserves the right to discontinue models at any time or change specifications without notice or without incurring obligation. All options are required in combination with other options. For the price of the model with the equipment you desire, or verification of specifications contained here, see your Dodge dealer. Dodge, HEMI, Mopar, Sentry Key, SRT, and SRT8 are registered trademarks and Uconnect is a trademark of Chrysler Group LLC. Insurance is underwritten by member companies of American International Group, Inc. Bluetooth is a registered trademark of Bluetooth SIG, Inc. Boston Acoustics and the Boston logo are registered trademarks of Boston Acoustics, Inc. HomeLink is a registered trademark owned by Johnson Controls, Inc. SIRIUS U.S. service available only in contiguous United States and D.C. Service available in Canada; see [www.siriuscanada.ca](http://www.siriuscanada.ca). Subscription required after 12-month subscription included with vehicle purchase. Subscriptions governed by SIRIUS Terms & Conditions available at [sirius.com](http://sirius.com). SIRIUS, XM and all related marks and logos are trademarks of SIRIUS XM Radio Inc. and its subsidiaries. iPod is a registered trademark of Apple Inc. All rights reserved. Brembo is a registered trademark of Brembo SpA. KICKER is a registered trademark of Stillwater Designs and Audio Inc.

**5 YEAR / 100,000 MILE**  
POWERTRAIN WARRANTY



**5-YEAR/100,000-MILE POWERTRAIN WARRANTY** Transferable. See dealer for a copy of limited warranty. Includes towing to an authorized dealer.

**3/36 BASIC LIMITED WARRANTY** All Dodge vehicles are covered by the Chrysler 3-year/36,000-mile Basic Limited Warranty. See dealer for a copy of this limited warranty. Excludes normal maintenance and wear items.

**Dodge Auto Insurance<sup>(1)</sup>** The only insurance guaranteed to repair your vehicle using Authentic Dodge Collision Repair Parts by Mopar for as long as you own your vehicle — at rates that are tough to beat. Plus, get up to \$100<sup>(2)</sup> in deductible waived when repairs are done at a Dodge dealership. For a quote, visit [cf.com/insurance](http://cf.com/insurance) or call (877) 244-1531.

Chrysler has a vested interest in your satisfaction with your new vehicle. Chrysler Service Contracts offer extended service plans to help ensure that you'll enjoy your vehicle for many years down the road ... for just pennies a day. For more information, see your Dodge dealer, call (800) 442-2666 or visit [dodge.com/csc](http://dodge.com/csc)

Enhance your Dodge Charger with Authentic Dodge Accessories by Mopar. They're designed specifically for your vehicle, for exceptional fit, finish and performance. Visit your dealership or [mopar.com](http://mopar.com)

With Uconnect, you're always connected — to people, places, music, movies, and the Internet.

SIRIUS Satellite Radio delivers over 130 channels, including 100% commercial-free music, sports, news, talk, entertainment, traffic and weather. Factory-installed SIRIUS Satellite Radio includes a one-year subscription. For more information, go to [sirius.com](http://sirius.com).

The Dodge Goods catalog is a handpicked collection of items bearing the powerful Dodge name — from Motorsports apparel and collectible die-cast models to the latest in work and ranch wear. It's all found at [dodge.com/goods](http://dodge.com/goods). Call 877-789-DODGE (3634) for a free catalog.

**Honoring Those Who Serve.** Chrysler Group LLC proudly supports the members of the U.S. Armed Forces and their families.

<sup>(1)</sup>Insurance provided through 21st Century Insurance and Financial Services, Wilmington, DE, managing general agent for the personal lines insurers of American International Companies. <sup>(2)</sup>Coverage features and availability may vary by state.