

2011 HYUNDAI **SANTA FE**





LIMITED IN MOONSTONE SILVER

THE MORE QUESTIONS YOU ASK, THE MORE CLEAR THE ANSWER BECOMES.

Purchasing an SUV is a big decision. There are plenty of questions that arise. Questions that point to one beautiful answer: The 2011 Hyundai Santa Fe. Outside, gracefully sculpted lines offer clues to the refined driving experience that awaits. A wide track – wider than Ford Explorer or Chevy Equinox – provides a strong stance, improved handling (its tight turning radius ranks near the top of its segment) and increased interior room.

What fills all the roominess inside? A standard Bluetooth® hands-free phone system and the Limited model's Infinity Logic 7[®] 605-watt surround-sound audio system hint at the modern conveniences Hyundai designers packed into this versatile SUV.¹ The attention to detail in its fit, finish and choice of high-quality materials makes it feel like you've won something special each time you unlock the doors.

What's under the hood? Santa Fe offers a choice of two state-of-the-art engines from the latest generation of Hyundai powerplants: A 2.4-liter, 175 hp 4-cylinder or a 3.5-liter, 276 hp V6. An ultra-smooth 6-speed transmission and available All Wheel Drive help Santa Fe's highly efficient drivetrain deliver exceptional performance. With equally impressive fuel economy and towing capacity.

What's under the skin? A long list of standard safety features – one of the most comprehensive in its class. America's Best Warranty?² It's in the mix, leaving room for one more feature on the spec sheet: Peace of mind. Standard on every 2011 Hyundai Santa Fe.

AMERICA'S **BEST** WARRANTY

POWERTRAIN
LIMITED WARRANTY

10 YEARS
100,000 MILES

NEW VEHICLE
LIMITED WARRANTY

5 YEARS
60,000 MILES

ANTI-PERFORATION
WARRANTY

7 YEARS
UNLIMITED MILES

24-HOUR
ROADSIDE ASSISTANCE

5 YEARS
UNLIMITED MILES



LIMITED AWD WITH NAVIGATION PACKAGE IN BEIGE LEATHER

SO SAFE, THE ROAD HUGS YOU BACK.

With a full suite of traction technologies, it's no surprise that the 2011 Santa Fe holds the road with a tenacious grip – while protecting its occupants in an equally rigorous manner. Santa Fe's confidence-inspiring safety and sure-footed handling begin with rugged unibody construction. Strategically placed crumple zones, side-impact door beams and high-strength steel create an insulating structure that helps protect you in the event of a collision. Adding to this cocoon are six airbags: Two front airbags, two front seat-mounted side-impact airbags, and two roof-mounted side-curtain airbags with rollover sensors for front and outboard rear-seat occupants.¹ To help you avoid collisions in the first place, there's an advanced Anti-lock Braking System with Electronic Brake-force Distribution and Electronic Stability Control with a Traction Control System. Embraced by all of Santa Fe's road-hugging safety technologies, it might feel as if the road is hugging you back – and keeping you safe – around every turn.



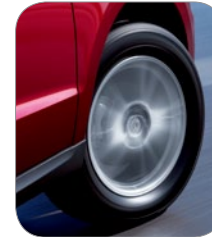
ADVANCED AIRBAG SAFETY

Santa Fe's six standard airbags include side curtain airbags with rollover sensors. According to the Insurance Institute for Highway Safety (IIHS), the combination of side and curtain airbags, which help protect the head and body during side impacts, can reduce fatalities by 52% for SUV drivers.²



ROLLOVER SENSORS

When Santa Fe's sensors detect a potential rollover, they activate the seatbelt pretensioners and keep side-curtain airbags inflated for a longer period of time to better protect passengers.



TRACTION CONTROL SYSTEM

For greater control when accelerating or driving in the wet, Santa Fe's standard Traction Control System automatically optimizes engine power and/or applies braking when slippage is detected to reroute power where the grip is greatest.⁴



TIRE PRESSURE MONITORING SYSTEM

A sensor in the valve stem of each wheel triggers a warning light when the air pressure of any tire falls below its optimal level.³

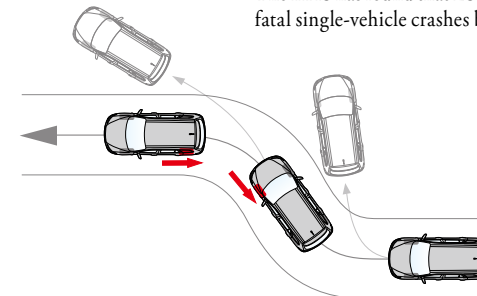


6-SPEED AUTOMATIC TRANSMISSION

An available 6-speed electronically controlled automatic transmission offers state-of-the-art shifting, seamlessly matching engine speed to the appropriate gear for each driving condition.

ELECTRONIC STABILITY CONTROL

Onboard Santa Fe is an active safety system that automatically applies the brakes to individual wheels and adjusts throttle input as needed to help maintain control in all driving conditions.⁵ The IIHS has found that ESC reduces the risk of fatal single-vehicle crashes by 49%.²



¹The Supplemental Restraint System (SRS) is designed to work with the 3-point seatbelt system. The SRS deploys in certain frontal and/or side-impact conditions where significant injury is likely. The SRS is not a substitute for seatbelts, which should be worn at all times. Children under the age of 13 should be restrained securely in the rear seat. NEVER place a rear-facing child seat in the front seat of a vehicle that has a passenger-side airbag. ²For details, visit www.iihs.org. ³The Tire Pressure Monitoring System is not a substitute for proper maintenance. ⁴The Traction Control System is meant to enhance conscientious driving habits and is not a substitute for safe driving practices. ⁵Electronic Stability Control (ESC) cannot control your vehicle's stability under all driving situations. ESC is not a substitute for safe driving practices. No system, no matter how advanced, can overcome physics or correct poor driving. The driver is always responsible for controlling the vehicle and must use caution to avoid loss of control in all driving conditions. Speed, road conditions and driver steering input will affect whether ESC can help prevent loss of control. See Owner's Manual for details.



LIMITED AWD IN SONORAN RED

IT'S TIME FOR YOUR COMPLIMENTARY UPGRADE.

Pragmatist that you are, you still enjoy surrounding yourself with luxuries. No worries – your secret is safe with us. The 2011 Hyundai Santa Fe offers an abundance of comfort and convenience features. You'll find a standard Bluetooth® hands-free phone system.¹ Audio jacks for your iPod® and USB device.² And steering wheel audio controls. Heated front seats and leather seating surfaces throughout are also standard on Limited. Ditto a power driver seat with adjustable lumbar support. Want a tour guide? An available navigation system on Santa Fe SE and Limited models offers XM NavTraffic® real-time traffic information, along with a rearview camera.³ Enjoy the open air? A power tilt-and-slide glass sunroof with one-touch open and a sliding sunshade are standard on Limited and available on our SE model. Even at the Santa Fe's value-oriented price point, your SUV experience has a decidedly upscale feel.



VERSATILE SEAT VARIATION

Need to ferry 5 passengers? Haul home an estate-sale find? Santa Fe can help you make these arrangements. And many more.



BLUETOOTH® TECHNOLOGY

Santa Fe's standard Bluetooth audio system puts hands-free phone operation at your fingertips or within the sound of your voice.



HOMELINK®

Garage doors, gates, home lighting and security systems can all be operated at the touch of a button with HomeLink, which is integrated into Santa Fe Limited's electrochromic auto-dimming rearview mirror.⁴



ADVANCED NAVIGATION

Easy-to-read maps and easy-to-follow voice commands make finding your destination a no-brainer with an available 6.5" touch-screen navigation system on SE and Limited models.



HANDS-ON CONTROL

Santa Fe's tilt-and-telescopic steering wheel (wrapped in leather on SE and Limited models) reaches for your palms and places audio and cruise controls at your command.

¹The Bluetooth® wordmark and logos are registered trademarks owned by Bluetooth SIG, Inc., and any use of such marks by Hyundai is under license. Other trademarks are those of their respective owners. ²iPod® is a registered trademark of Apple Inc. ³XM NavTraffic® requires a monthly subscription sold separately after a complimentary 90-day trial subscription and is available only in select markets. For more information, see www.xmradio.com/navtraffic. The XM name, XM Satellite Radio and XM NavTrafficare registered trademarks of XM Satellite Radio Inc. ©2010 XM Satellite Radio Inc. All rights reserved. ⁴HomeLink® is a registered trademark of Johnson Controls, Inc.

2011 SANTA FE LINE UP

GLS



SE



LIMITED



Key Standard Equipment:

- 2.4L DOHC 4-cylinder or 3.5L V6 engine with Continuously Variable Valve Timing
- 6-speed manual transmission (2.4L) or 6-speed automatic transmission w/ SHIFTRONIC® (3.5L)
- 17" alloy wheels
- Electronic Stability Control with Traction Control System
- Anti-lock Braking System with Electronic Brake-force Distribution and Brake Assist
- Six airbag safety system with dual advanced front airbags, side airbags and roll-over sensing side curtain airbags
- Active front seat head restraints
- Tire Pressure Monitoring System
- Air conditioning with cabin air filtration system and second-row air vents
- AM/FM/XM®/CD/MP3 6-speaker audio system with iPod®/USB auxiliary jacks
- Integrated Bluetooth® hands-free phone system
- Steering wheel audio, cruise and hands-free phone controls
- Tilt-and-telescopic steering wheel
- Tiger stripe woodgrain trim & deluxe seat cloth
- Rear folding 60/40 split seats
- Lower bodyside molding
- Auto-fold second row head restraints
- Black heated power exterior mirrors
- Adjustable lumbar support
- Power windows with driver auto down/up
- Power door and tailgate locks
- Remote keyless entry system with alarm
- Roof rack side rails
- Front solar glass and rear privacy glass
- Sun visors with illuminated vanity mirrors

GLS equipment plus :

- + 3.5L DOHC V6 engine with Continuously Variable Valve Timing
- + 6-speed automatic transmission with SHIFTRONIC® shift feature
- + 18" Euroflange alloy wheels
- + Bodycolor rear spoiler w/ integrated LED rear brake light
- + Driver seat with power-adjustable lumbar support
- + Leather/cloth seating surfaces
- + Auto-dimming interior mirror with compass
- + Roof rack cross rails
- + Bodycolor exterior mirrors
- + Fog lights
- + Leather-wrapped steering wheel & shift knob
- + Windshield wiper de-icer
- + Trailer Prep Package with up to 3,500 lb towing capacity
- + Automatic headlights
- + Heated front seats (AWD model)

Premium Package :

- Power tilt-and-slide sunroof
- Advanced navigation system with XM NavTraffic® and 6.5" touchscreen
- 360-watt AM/FM/XM®/CD/MP3 premium audio system with rear subwoofer and six speakers
- Rearview backup camera

SE equipment with

2.4L 4-cylinder or 3.5L V6 plus :

- + Leather seating surfaces
- + Heated front seats
- + Infinity Logic 7® AM/FM/XM®/MP3 surround-sound audio system with subwoofer, 6-disc CD changer and 605-watt external amp
- + Dual-zone automatic temperature control with CleanAir Ionizer & outside temperature display
- + Power tilt-and-slide sunroof
- + Chrome accent exterior door/liftgate handles
- + Deluxe metal accent door scuff
- + HomeLink® Integrated Transceiver
- + Trailer Prep Package with up to 3,500 lb towing capacity (V6 only)
- + Rear-cargo area 115-volt power outlet (V6 only)

Navigation package :

- Advanced navigation system with XM NavTraffic® and 6.5" touchscreen (deletes 6-disc CD changer)
- Rearview backup camera

EPA MILEAGE ESTIMATES: (City/Highway/Combined)

	2.4 L	3.5 L
FWD with Manual Transmission	19 / 26 / 21	—
FWD with Automatic Transmission	20 / 28 / 23	20 / 26 / 23
AWD with Automatic Transmission	20 / 25 / 22	20 / 26 / 22



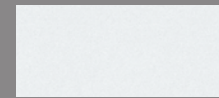
NP020-72011

HYUNDAI.COM

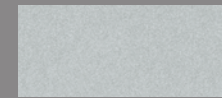
©2010 HYUNDAI

Fuel economy estimated by EPA for comparison. While the information contained in this brochure was correct at the time of printing, specifications and equipment can change. Feature comparisons based on competitor information available at the time of printing. No warranty or guarantee is being extended in this brochure, and Hyundai reserves the right to change product specifications and equipment at any time without incurring obligations. Some vehicles are shown with optional equipment. Specifications apply to U.S. vehicles only. Please contact your Hyundai dealer for current vehicle specifications. As part of Hyundai's commitment to a sustainable environment, this brochure is printed using paper certified by the Forest Stewardship Council. FSC certification helps ensure that the highest social and environmental standards are met in the making of the paper we use, contributing to conservation, responsible management, and community level benefits for people near the forests.

EXTERIOR_COLOR CHOICES



FROST WHITE PEARL



MOONSTONE SILVER



MINERAL GRAY



SONORAN RED



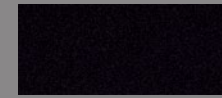
BLACK FOREST GREEN



ESPRESSO BROWN



PACIFIC BLUE PEARL



PHANTOM BLACK METALLIC

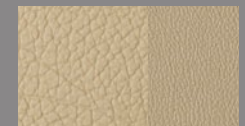
INTERIOR_COLOR CHOICES



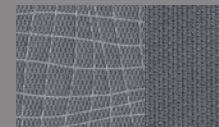
GLS:
BEIGE CLOTH



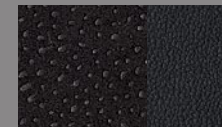
SE: GRAY LEATHER BOLSTER/
CLOTH



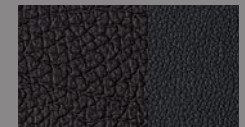
LIMITED:
BEIGE LEATHER



GLS:
GRAY CLOTH



SE: COCOA BLACK LEATHER
BOLSTER/CLOTH



LIMITED:
COCOA BLACK LEATHER

WEBSITE_HYUNDAI.COM

Be sure to visit our website, where you can build your own Santa Fe, locate a Hyundai dealer near you, and best of all – schedule a test drive.



Mixed Sources

Product group from well-managed forests, controlled sources and recycled wood or fiber
www.fsc.org SG5-COC-007477
© 1996 Forest Stewardship Council