

2010 HYUNDAI_SANTA FE





LIMITED IN IRIDESCENT SILVER BLUE PEARL

SANTA FE. VERSATILITY DEFINED.

Look up the definition of “versatility” in the dictionary. If it doesn’t cite Hyundai Santa Fe, it should. Santa Fe offers a choice of state-of-the-art engines that deliver greater performance and fuel economy. There’s a new 2.4-liter, 4-cylinder or a new 3.5-liter V6 engine with new 6-speed transmissions available. There’s a long list of standard safety features, and an available all-wheel-drive system. Add a well-appointed cabin, and you’ve got the definitive example of a versatile vehicle.

It’s also a superlative value. The Hyundai Santa Fe topped the “20 least expensive 2009 vehicles to insure” list by Insure.com, an information service that caters to the needs of self-directed insurance shoppers.¹

Words like value and versatility may not be the only ones that come to mind when you first encounter Santa Fe. The craftsmanship evident in its fits, finishes and high-quality materials are sure to grab your attention as well. And Santa Fe earned a Five Star rating in crash tests conducted by National Highway Traffic Safety Administration.

Obviously, Hyundai engineers have given you a lot to think about. Isn’t that how it should be?

AMERICA’S BEST WARRANTY

POWERTRAIN LIMITED WARRANTY

10 YEARS
100,000 MILES

NEW VEHICLE LIMITED WARRANTY

5 YEARS
60,000 MILES

ANTI-PERFORATION WARRANTY

7 YEARS
UNLIMITED MILES

24-HOUR ROADSIDE ASSISTANCE

5 YEARS
UNLIMITED MILES

¹Insure.com, *The most and least expensive 2009 vehicles to insure*, May 2009.

WHO SAYS YOU CAN'T BUY HAPPINESS?

Santa Fe sells it by the cubic foot – up to 78.2 cu. ft. of cargo volume, or over 108 cu. ft. of passenger volume. With an interior that seats up to five, while still leaving lots of room for cargo, Santa Fe has the necessities covered. But Hyundai also knows how you enjoy surrounding yourself with luxuries. Which is why it offers a surprisingly long list of comfort and convenience features.¹

Like to mix some soothing warmth with your morning coffee? Heated front seats are standard on Limited, as are leather seating surfaces and a power driver seat with adjustable lumbar support. Want a tour guide? There's an available navigation system offering XM® NavTraffic real-time traffic information.² Enjoy the open air? A power tilt-and-slide glass sunroof with one-touch open and sliding sunshade is standard on Limited, and available on both GLS and SE.



NAVIGATION

Santa Fe is available with touch-screen navigation. Easy-to-read maps and easy-to-follow voice commands make finding your destination a delight.



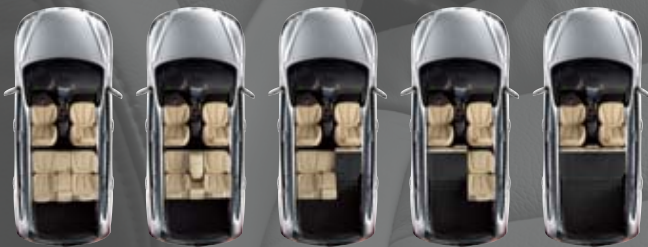
BLUETOOTH® WIRELESS TECHNOLOGY

Want hands-free phone operation and music streaming? Santa Fe's integrated Bluetooth hands-free phone system makes it possible.³



HOMELINK®

Garage doors, gates, home lighting and security systems can all be operated at the touch of a button with HomeLink, which is integrated into Santa Fe Limited's electrochromic auto-dimming rearview mirror.⁴



SEAT VARIATION

Need to ferry 5-passengers? Haul home an estate-sale find? Santa Fe has the versatility your entire family needs.



LIMITED AWD WITH NAVIGATION PACKAGE IN BEIGE LEATHER



¹Several of the features listed are optional equipment. Please consult the back page of this brochure or your Hyundai dealer for more details. ²XM® Satellite Radio requires XM subscription sold separately after complimentary introductory period. See your dealer for details. Fees and programming subject to change. XM service only available in the 48 contiguous United States. ©2009 XM Satellite Radio Inc. XM name and logos are registered trademarks of XM Satellite Radio. Other trademarks and channel names are the property of their respective owners. ³The Bluetooth® wordmark and logos are registered trademarks owned by Bluetooth SIG, Inc., and any use of such marks by Hyundai is under license. Other trademarks are those of their respective owners. ⁴HomeLink® is a registered trademark of Johnson Controls, Inc.

STELLAR PERFORMANCE. FIVE STAR SAFETY.

Santa Fe is designed to perform on the road, and in the research lab. In tests conducted by the NHTSA, Hyundai Santa Fe earned the highest possible rating – Five Stars – in frontal and side crash testing.¹ The safety technology that comes standard on Santa Fe includes front and rear crumple zones, side-impact door beams, hood buckling creases and an energy-absorbing steering column. There are six airbags: Two front airbags, two front seat-mounted side-impact airbags, and two roof-mounted side-curtain airbags with rollover sensors for front and outboard rear-seat occupants.² To help you avoid collisions in the first place, there's an Anti-lock Braking System with Electronic Brake-force Distribution and Electronic Stability Control with Traction Control System.³



3.5-LITER V6 ENGINE

Santa Fe now offers a new 3.5-liter V6 engine. Smooth, powerful and efficient, its torque-rich response affords you one of the keys to driving safety: Peace of mind.



6-SPEED AUTOMATIC TRANSMISSION

A state-of-the-art transmission, Santa Fe's new available 6-speed electronically controlled automatic seamlessly matches engine speed to the appropriate gear.



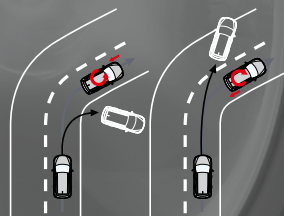
ROLLOVER SENSOR

When the sensors detect a potential rollover, they trigger the side-curtain airbags and seatbelt pretensioners to help protect passengers.



TRACTION CONTROL SYSTEM

For greater control when accelerating or driving in the wet, the Traction Control System that's standard on Santa Fe automatically reduces engine power and/or applies braking when slippage is detected, effectively rerouting power where the grip is greatest.



ELECTRONIC STABILITY PROGRAM

Onboard is an active safety system that automatically applies the brakes to individual wheels and adjusts throttle input as needed to help keep your Santa Fe on its intended path.



TIRE PRESSURE MONITORING SYSTEM (TPMS)

An air pressure sensor is located at the valve stem of each wheel. When the pressure of any tire falls below its optimal level, a warning light on the instrument panel alerts you, helping to avoid dangerous situations that could arise from driving on under-inflated tires.⁴



LIMITED AWD IN VENETIAN RED.⁴



¹Government star ratings are part of the National Highway Traffic Safety Administration's (NHTSA's) New Car Assessment Program (www.safercar.gov). ²The Supplemental Restraint System (SRS) is designed to work with the 3-point seatbelt system. The SRS deploys in certain frontal and/or side-impact conditions where significant injury is likely. The SRS is not a substitute for seatbelts, which should be worn at all times. Children under the age of 13 should be restrained securely in the rear seat. NEVER place a rear-facing child seat in the front seat of a vehicle that has a passenger-side airbag. ³Electronic Stability Control (ESC) cannot control your vehicle's stability under all driving situations. ESC is not a substitute for safe driving practices. No system, no matter how advanced, can overcome physics or correct poor driving. The driver is always responsible for controlling the vehicle and must use caution to avoid loss of control in all driving conditions. Speed, road conditions and driver steering input will affect whether ESC can help prevent loss of control. See Owner's Manual for details. The Traction Control System (TCS) is meant to enhance conscientious driving habits and is not a substitute for safe driving practices. ⁴TPMS is not a substitute for proper maintenance.

2010 SANTA FE_LINE UP



GLS

KEY STANDARD EQUIPMENT :

- 2.4L DOHC 4-cylinder engine
- 6-speed manual transmission
- 17" alloy wheels
- Electronic Stability Control (ESC) with Traction Control System (TCS)
- Anti-lock Braking System (ABS) w/ Brake Assist & Electronic Brake-force Distribution (EBD)
- Advanced front, enhanced front side & rollover-sensing side curtain airbags
- Active front seat head restraints
- Tire Pressure Monitoring System
- Air conditioning with cabin air filter
- AM/FM/CD/MP3 6-speaker audio system with iPod/USB/aux jacks, XM[®] Satellite Radio and 3 months service (XM not available in AK or HI)
- Integrated Bluetooth[®] Hands Free Phone System
- Steering wheel audio controls
- Tiger stripe woodgrain trim
- Deluxe seat cloth
- Lower bodyside molding
- Auto-fold second row head restraints
- Multi-function trip computer
- Black heated power mirrors
- 8-way driver seat with adjustable lumbar support
- Power windows with driver auto down/up
- Power door/taillgate locks
- Tilt-and-telescopic steering wheel
- Steering wheel cruise controls
- Keyless entry system with alarm
- Roof rack side rails
- Rear privacy glass
- Sun visors with illuminated vanity mirrors

PREMIUM PACKAGE :

- Power tilt-and-slide sunroof
- Premium audio with external amp & subwoofer
- Automatic headlights



SE

GLS EQUIPMENT PLUS :

- + 3.5L DOHC V6 engine
- + 6-speed automatic transmission with SHIFTRONIC[®] shift feature
- + 18" Euro flange alloy wheels
- + Bodycolor rear spoiler
- + Power driver seat with lumbar support
- + Leather/cloth seating surfaces
- + Auto dimming interior mirror with compass
- + Roof rack cross rails
- + Bodycolor exterior mirrors
- + Fog lights
- + Leather-wrapped steering wheel & shift knob
- + Windshield wiper de-icer
- + Trailer Prep Package
- + Automatic headlights
- + Add heated front seats to AWD

PREMIUM PACKAGE :

- Power tilt-and-slide sunroof
- Navigation system with 6.5" screen
- Premium audio with external amp & subwoofer
- Rearview camera

EPA MILEAGE ESTIMATES: (City/Highway/Combined)

	2.4 L	3.5 L
FWD with Manual Transmission	19 / 26 / 22	—
FWD with Automatic Transmission	20 / 28 / 23	20 / 26 / 23
AWD with Automatic Transmission	21 / 27 / 23	20 / 26 / 22



LIMITED

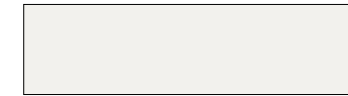
SE EQUIPMENT WITH 2.4L 4-CYLINDER OR 3.5L V6 PLUS :

- + Leather seating surfaces
- + Heated front seats
- + Dual-zone automatic temperature control with outside temperature display & CleanAir Ionizer
- + Power tilt-and-slide sunroof
- + Chrome accent exterior door/liftgate handles
- + Deluxe metal accent door scuff
- + HomeLink[®] Integrated Transceiver
- + V6 adds – Trailer Prep Package & 115-volt power outlet

NAVIGATION PACKAGE :

- Navigation system with 6.5" screen
- Premium audio with external amp & subwoofer
- Rearview camera

EXTERIOR_COLOR CHOICES



PEARL WHITE



IRIDESCENT SILVER BLUE PEARL



VENETIAN RED



INDIGO BLUE PEARL



PHANTOM BLACK METALLIC



RADIANT SILVER



HARBOR GRAY METALLIC



BLACK FOREST GREEN



PACIFIC BLUE PEARL

INTERIOR_COLOR CHOICES



LIMITED: BEIGE LEATHER



SE: GRAY LEATHER BOLSTER/CLOTH



GLS: GRAY CLOTH



LIMITED: COCOA BLACK LEATHER



SE: COCOA BLACK LEATHER BOLSTER/CLOTH



GLS: BEIGE CLOTH

WEBSITE_HYUNDAI.COM



Be sure to visit our website, where you can build your own Santa Fe, locate a Hyundai dealer near you, and best of all – schedule a test drive.



NP020-72010

HYUNDAI.COM

©2009 HYUNDAI

Fuel economy estimated by EPA for comparison. While the information contained in this brochure was correct at time of printing, specifications and equipment can change. Feature comparisons based on competitor information available at time of printing. No warranty or guarantee is being extended in this brochure, and Hyundai reserves the right to change product specifications and equipment at any time without incurring obligations. Some vehicles are shown with optional equipment. Specifications apply to U.S. vehicles only. Please contact your Hyundai dealer for current vehicle specifications. As part of Hyundai's commitment to a sustainable environment, this brochure is printed using paper certified by the Forest Stewardship Council. FSC certification helps ensure that the highest social and environmental standards are met in the making of the paper we use, contributing to conservation, responsible management, and community level benefits for people near the forests.