

2008 HYUNDAI TUCSON



*Experience it.*

THE TRUTH IS, finding a car that's right for you isn't that easy. You've got cars that over promise and under deliver. Cars that assume you've won the lottery and desperately want to part with the proceeds. And value-priced cars that, unfortunately, drive that way.

Fortunately, there is one company that understands and embraces the concept of what people really want in a car. That company is Hyundai.

We make smart cars for smart people. Cars that routinely get 5-star crash test ratings. Cars where the number of safety features takes precedence over the number of cupholders. And cars that put quality exactly where it belongs—first and foremost.

We also believe in a warranty that lasts twice as long as the average car loan. Not to mention the average car warranty.



**BOTH SIDES AGREE**

*For left-brain thinkers and  
right-brain dreamers.  
The 2008 Hyundai Tucson.*

We steadfastly adhere to the proposition that premium amenities are not to be reserved exclusively for the wealthy. That beautiful design shouldn't necessitate a second

mortgage. And that stimulating performance and handling needn't come from engineers with names like Hans and Giuseppe.

In other words, we believe in cars that don't insult your intelligence, but rather, respect it.

Like the versatile and sporty Tucson. Imagine having a backpack to carry all your gear. Snowboards. Mountain bikes. Cross-country skis. Now imagine it's powered by a 2.7-liter DOHC V6 engine, to get you to the action quicker. AutoPacific® called it the Best in Class Vehicle Satisfaction, Compact Crossover SUV.<sup>1</sup> You can call it the Tucson.

Now that we've whetted your appetite, feel free to turn the page and get better acquainted.

— Try This On For Size —

## **DOES A VEHICLE HAVE TO BE BIG AND CUMBERSOME TO BE SAFE AND SECURE?**

NOT ACCORDING TO THE NHTSA. They gave the compact Tucson their highest rating of 5 stars for both front- and side-impact collisions. And just because it's not a big gas guzzler doesn't mean Tucson isn't up for a challenge. Thanks to V6 power and advanced 4-wheel drive, there's never any lack of mechanical fortitude to get you to the places you like to visit. Plus, multiple passenger and cargo configurations maximize gear space as well as people space.



Ready When You Are

## OFF THE BEATEN PATH. THE ROAD LESS TRAVELED. THOSE ARE SOME OF TUCSON'S FAVORITE CLICHES.

AS LONG AS SKI LODGES ARE UP MOUNTAINS, and the best hiking is off a narrow, winding trail, the Tucson will be there to bring it within reach. A powerful 2.7-liter V6 engine routinely makes molehills out of mountains. Add that to a sophisticated 4-wheel-drive system that maximizes traction in tough-to-grip spots and a driver-selectable 4WD lock, and you've got a vehicle that lets you leave no road unexplored. So you get to be first in line for the ski lift. Arrive at the trailhead before sunset. And catch the waves before the lineup fills with grommets.



### BORGWARNER® 4WD

*This sophisticated torque management system transfers up to 50% of available torque to the rear wheels when necessary. Which comes in handy when you're in off-road and slippery situations.*



### 2.7-LITER V6 ENGINE

*The Tucson doesn't mess around when it comes to get-up-and-go. It offers a powerful V6 that churns out an impressive 173 horsepower and 178 lb.-ft. of torque.*



### FULLY INDEPENDENT SUSPENSION

*MacPherson front struts with coil springs. Gas-charged hydraulic shock absorbers. Multi-link rear suspension. Basically, you'll enjoy a smoother trip, no matter what the topography.*

*Exterior Versatility***TOP TO BOTTOM, THERE'S NOT AN  
UNVERSATILE BOLT IN ITS BODY.**

WHEN WE DESIGNED THE TUCSON, nothing was overlooked in order to bring you optimal utility and convenience. Starting with an underbody skid guard and tough lower bodyside cladding that can withstand anything a mountain pass or desert trail can throw at them. Roof rack cross rails to carry larger cargo. And step rails that help you reach roof-mounted items with ease. Since you like adventure, we'll leave the rest for you to discover when you come in for a test drive.



## Convenient Features



### HEATED POWER SIDE MIRRORS

*It might be frosty outside, but your fingers don't need to be. Use this convenient feature to defog the side mirrors for improved visibility. All with just the push of a button.*



### POWER SUNROOF

*You can enjoy the sun, stars or clear blue sky with this large power sunroof. Opt for the wind deflector to keep wind noise to a minimum.*



### AUTOMATIC TEMPERATURE CONTROL

*Simply set the air conditioning control to the precise temperature you want, and it will automatically adjust airflow and temperature to keep passengers as comfortable as can be.*



### AUXILIARY AUDIO INPUT JACK

*This convenient input jack<sup>1</sup> lets you plug in your favorite MP3 player so you can take thousands of tunes on the road, without lugging along a bunch of CDs.*



### WINDSHIELD WIPER DE-ICER

*After a long day on the slopes, the last thing you want is for your wipers to freeze to the windshield. So this feature warms the lower section of the glass to thaw frozen blades.*



### XM<sup>®</sup> SATELLITE RADIO

*Take more than 170 channels of digital-quality entertainment wherever you go. You'll enjoy a wide variety of commercial-free music, news, talk and specialty programming.<sup>1,2</sup>*



### ELECTROCHROMIC REARVIEW MIRROR

*This mirror automatically dims when bright headlights appear behind you, reducing glare. It also features an integrated compass to help you keep your bearings.*



### COMFORT

*Driving contentment comes courtesy of a 10-way adjustable driver seat with lumbar support. Available leather seating surfaces enhance your comfort and add an elegant touch.*



### REMOTE KEYLESS ENTRY

*When you've got your arms full of goodies from a day at the mall, it helps to have a key that unlocks the doors and tailgate for you. It doesn't get much more convenient than that.*



### BLUETOOTH WIRELESS TECHNOLOGY

*Safely make calls while driving with the Bluetooth<sup>®</sup> hands-free phone system.<sup>1</sup> Several unique phones can be recognized, so each user can talk hands-free.*



### ROOM FOR EVERYTHING

*Tucson's interior offers excellent cargo versatility and enough space to fit all of your gear, thanks to 60/40 split fold-flat rear seats and a wide tailgate opening with flip-up glass.*



### HEATED SEATS

*On a cold morning, Tucson's heated seats keep you warm and toasty for a comfortable drive no matter what the weather outside is like.*





LIMITED IN BEIGE LEATHER





## PREVENTING AN ACCIDENT IS THE BEST WAY TO SURVIVE ONE.

IT'S COMMON SENSE REALLY, but a fact that goes beneath the notice of many car companies. Not Hyundai. That's why we fill our cars with cutting-edge active safety features—standard—that work dynamically with input from you and the road to help prevent an accident in the event of an emergency. Which is why a Hyundai is the ideal vehicle to protect you, your passengers and your peace of mind.



### ELECTRONIC STABILITY CONTROL

*Get a grip, thanks to ESC. An advanced, electronically-controlled system reads data from sensors throughout the vehicle. Input is relayed to a sophisticated computer which enables ESC to react instantaneously to input from you and the road.<sup>1</sup>*



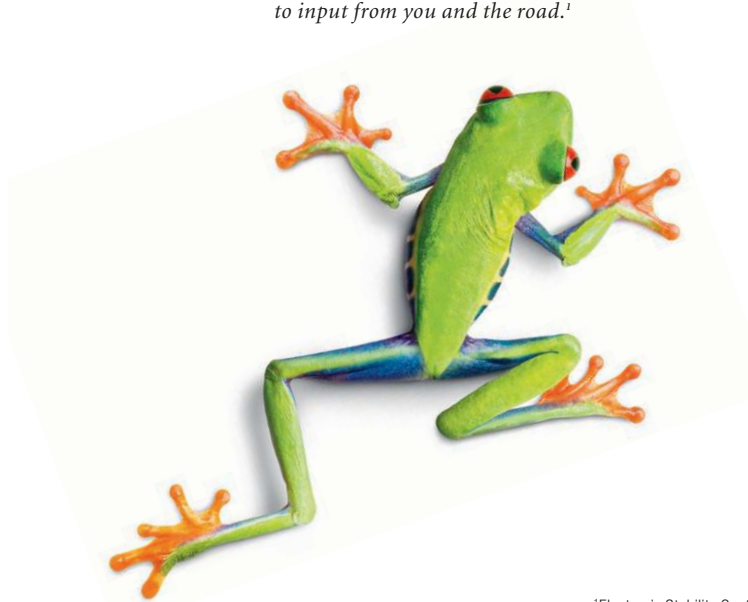
### TRACTION CONTROL SYSTEM

*Wet pavement may have met its match. The advanced Traction Control System senses unexpected wheelspin while accelerating and automatically applies the appropriate combination of brakes and throttle to route power to the tire with the most traction.<sup>2</sup>*



### ANTI-LOCK BRAKING SYSTEM

*ABS prevents wheel lock-up and helps maintain steering control, even during emergency braking situations, by rapidly pulsing the brakes. So you can control steering to successfully maneuver around objects ahead of you.*



### ELECTRONIC BRAKE-FORCE DISTRIBUTION

*You never know where you'll be when you need to stop quickly—from a dirt road to a major thoroughfare. EBD uses a network of sensors to provide the appropriate braking pressure at each wheel for maximum braking performance.*



### BRAKE ASSIST

*Statistics show that drivers frequently don't brake forcefully enough in an emergency situation. Brake Assist actually senses when you are in a panic stop and immediately applies the maximum braking pressure to help you stop in a shorter distance.*



## NHTSA 5-STAR CRASH RATING

*Tucson has received the U.S. government's highest crash rating of 5 stars for both front- and side-impact collisions.<sup>1</sup>*

ON TOP OF OUR ACTIVE SAFETY FEATURES, the Tucson is equipped with a host of standard passive safety features as well. Because we take the task of keeping you and your passengers safe just as seriously as you do. From an advanced airbag system to active front head restraints<sup>2</sup> to rear child-seat anchors, our commitment to safety is clear in every detail. So, should an accident occur, you can rest assured that you're surrounded by state-of-the-art safety engineering and numerous features that have all been proven to help minimize the effects of it.



### STRUCTURAL INTEGRITY

*You wouldn't build a house on a shaky foundation. Same goes for cars. We built the Tucson with a reinforced unibody construction of high-tensile steel to effectively absorb collision energy.*



### TIRE PRESSURE MONITORING SYSTEM

*Each wheel is equipped with an air-pressure sensor located at the valve stem. In the event that any tire reaches a specified low air pressure, a warning light will alert you.<sup>3</sup>*



### SIX AIRBAGS

*When it comes to airbags, there truly is safety in numbers. Our advanced dual front airbags with an Occupant Classification System, front seat-mounted side-impact airbags and roof-mounted side-curtain airbags<sup>4</sup> play a big part in Tucson's NHTSA 5-star crash rating.*



### DUAL SEATBELT PRETENSIONERS

*These units tighten the safety belt across the shoulder and lap in certain accidents to reduce the front occupants' forward movement. Force limiters release slack to limit load across the body.*



### ENERGY-ABSORBING STEERING COLUMN

*An NHTSA report confirms that an energy-absorbing steering column, which collapses away from the driver in the event of a frontal collision, is a vital safety feature.*

<sup>1</sup>Government star ratings are part of the National Highway Traffic Safety Administration's (NHTSA's) New Car Assessment Program ([www.safercar.gov](http://www.safercar.gov)). 2006 model tested with standard side-impact airbags (SABs). <sup>2</sup>Later availability. <sup>3</sup>TPMS is not a substitute for proper maintenance. See Owner's Manual for details. <sup>4</sup>The Supplemental Restraint System (SRS) is designed to work with the 3-point seatbelt system. The SRS deploys in certain frontal and/or side-impact conditions where significant injury is likely. The SRS is not a substitute for seatbelts, which should be worn at all times. Children under the age of 13 should be restrained securely in the rear seat. NEVER place a rear-facing child seat in the front seat of a vehicle that has a passenger-side airbag.

## IT'S DIFFICULT TO PREDICT THE FUTURE. UNLESS YOU HAPPEN TO BE DESIGNING IT.

IT TAKES A WORLD OF PEOPLE TO MAKE A HYUNDAI. From our R&D Center in South Korea, where we conduct predesign studies, prototyping, full-scale aerodynamics analysis, crash testing and test driving. To Alabama and our \$1.1 billion state-of-the-art manufacturing plant. To Michigan and our engineering center. To our Southern California design facility, where we utilize the world's most advanced visualization, graphics and clay-modeling technologies. To our environmental technology research center in Seoul. Together, these facilities ensure that every vehicle we build is at the forefront of automotive technology.





**WE'RE VERY HANDS ON**

*We hand check nuts, bolts, cables, wiring and power components before any Hyundai leaves the plant. Then every vehicle is road tested to eliminate squeaks and rattles that can't be detected on the factory floor.*



**PERFECTION IS OUR OBSESSION**

*For example, this door hinge used to look a little different. But our engineers noticed that the old design was adding a minute amount of wind noise to the vehicle. So they redesigned it. Now it adds none at all.*



**YOU CAN NEVER BE TOO SAFE**

*Our vehicles' excellent safety ratings are the result of thousands of hours of simulations in state-of-the-art safety testing facilities. Is destroying millions of dollars worth of automobiles worth it? Absolutely.*



**PROVEN BEFORE IT'S DRIVEN**

*At our California Proving Grounds, every new design is tested in real-world situations. This includes a 6.4-mile track to evaluate engine and road noise, and a 3.3-mile road course that simulates America's highways.*



**MEET OUR QUALITY INSPECTOR**

*An army of 250 robots, equipped with optical sensors far more sensitive than the human eye, inspects every vehicle for quality welds and proper fit. This ensures tight seams and seals, as well as perfect alignment.*



**WE TREAT OUR BODIES LIKE TEMPLES**

*Prior to painting, the body of each Hyundai is electrically charged, then immersed in a primer bath with an opposite charge. This ensures even hidden surfaces are completely coated for incredible corrosion resistance.*



**THE MYSTERIOUS 2.3 MILES**

*Every new Hyundai that comes out of our Alabama plant has 2.3 miles on the odometer. That's because each one is road tested on our test track to ensure every vehicle is working perfectly.*



**TESTED TO THE EXTREMES**

*From the scorching heat of Death Valley, Calif., to the frozen tundra of central Canada, our cars are tested in the most extreme conditions. This ensures their performance never wavers, no matter what life throws your way.*

**10-YEAR/100,000-MILE**  
POWERTRAIN PROTECTION

**5-YEAR/60,000-MILE**  
NEW VEHICLE LIMITED WARRANTY

**7-YEAR/UNLIMITED MILES**  
ANTI-PERFORATION WARRANTY

**5-YEAR/UNLIMITED MILES**  
24-HOUR ROADSIDE ASSISTANCE

*America's Best Warranty*

## **A FIVE-YEAR WARRANTY SAYS A LOT ABOUT THE CAR. A TEN-YEAR WARRANTY SAYS A LOT ABOUT THE CAR COMPANY.**

IT SAYS THAT WE STAND BEHIND OUR VEHICLES with a warranty matched by no other automaker in the country.<sup>1</sup> It says your new Hyundai's powertrain may be covered until the year 2018. (Just think about that for a minute.) But above all, it says that we build a vehicle that you can rely on. That as a company, we're committed to your satisfaction, long after you leave the dealership and your car is bought and paid for. And that's as refreshing now as it will be in a decade.



TUCSON

AZERA SONATA ELANTRA ACCENT TIBURON SANTA FE VERACRUZ ENTOURAGE

 **HYUNDAI** | 08 TUCSON

<sup>1</sup>See dealer for LIMITED WARRANTY details.



### TUCSON GLS

#### STANDARD FEATURES INCLUDE:

- 2.0-liter, 16-valve, DOHC In-line 4-cylinder engine with CVVT
- 5-speed manual transmission
- 4-wheel independent suspension
- Electronic Stability Control
- Traction Control System
- 4-wheel Anti-lock Braking System
- Electronic Brake-force Distribution
- Brake Assist
- 16-inch, 5-spoke alloy wheels with P215/65R tires
- Tire Pressure Monitoring System
- Advanced dual front airbags with Occupant Classification System, front side-impact airbags, front and rear side-curtain airbags
- Tilting front head restraints
- AM/FM/CD audio system with six speakers<sup>1</sup>
- XM<sup>®</sup> Satellite Radio<sup>2,3</sup>
- Auxiliary audio input jack<sup>2</sup>
- Tilt steering wheel
- Two-tier center console with armrest
- Power windows and door locks
- Dual heated power side mirrors
- 10-way adjustable driver seat and 4-way adjustable fold-flat front passenger seat
- 60/40 split fold-flat rear seatback
- Cabin air filter
- Flip-up tailgate glass
- Rear intermittent wiper/washer



### TUCSON SE

#### INCLUDES ALL STANDARD GLS FEATURES PLUS:

- 2.7-liter, 24-valve, DOHC V6 engine
- Chrome-tipped dual exhaust
- 4-speed automatic transmission with SHIFTRONIC<sup>®</sup>
- 16-inch, 5-double-spoke alloy wheels with P235/60R tires
- Tire Pressure Monitoring System
- Air conditioning
- 140-watt AM/FM/Cassette/CD/MP3 audio system with six speakers
- Multi-function trip computer
- Cruise control
- Premium seat cloth
- Leather-wrapped steering wheel and shift knob
- Metalgrain interior trim
- Illuminated ignition surround
- Dual front illuminated vanity mirrors
- Front fog lights
- Bodycolor door handles and side mirrors
- Lower bodyside cladding
- Chrome rear garnish



### TUCSON LIMITED

#### INCLUDES ALL STANDARD SE FEATURES PLUS:

- Monochromatic exterior color scheme
- Leather seating surfaces
- Heated front seats
- Automatic temperature control with outside temperature display
- Air Quality System
- 200-watt AM/FM/in-dash 6-disc CD/MP3 changer with subwoofer and equalizer
- Electrochromic auto-dimming rearview mirror with compass
- Carpeted cargo mat
- Rear retractable cargo cover
- Windshield wiper de-icer

#### EXTERIOR COLOR CHOICES



NORDIC WHITE

INTERIOR: GLS BEIGE OR GRAY, SE BEIGE OR GRAY



PLATINUM

INTERIOR: GLS BEIGE OR GRAY, SE BEIGE OR GRAY, LIMITED BEIGE OR BLACK



DARK TITANIUM GRAY

INTERIOR: GLS BEIGE OR GRAY, SE BEIGE OR GRAY



NAUTICAL BLUE

INTERIOR: GLS BEIGE OR GRAY, SE BEIGE OR GRAY



DESERT SAGE

INTERIOR: GLS BEIGE, SE BEIGE, LIMITED BEIGE



ALPINE FROST

INTERIOR: GLS BEIGE OR GRAY, SE BEIGE OR GRAY, LIMITED BEIGE OR BLACK



MESA RED

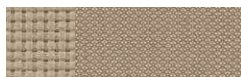
INTERIOR: GLS BEIGE OR GRAY, SE BEIGE OR GRAY



OBSIDIAN BLACK

INTERIOR: GLS BEIGE OR GRAY, SE BEIGE OR GRAY, LIMITED BEIGE OR BLACK

#### INTERIOR COLOR CHOICES



GLS BEIGE CLOTH



GLS GRAY CLOTH



SE PREMIUM BEIGE CLOTH



SE PREMIUM GRAY CLOTH



LIMITED BEIGE LEATHER



LIMITED BLACK LEATHER

S = STANDARD  
O = OPTIONAL FEATURE  
– = NOT AVAILABLE  
P = PREMIUM PACKAGE

SAFETY FEATURES	GLS	SE	LIMITED
Electronic Stability Control (ESC)	S	S	S
Traction Control System (TCS)	S	S	S
4-wheel Anti-lock Braking System (ABS), Electronic Brake-force Distribution (EBD), Brake Assist	S	S	S
Advanced Driver and Front Passenger Airbags (SRS) with Occupant Classification System (OCS)	S	S	S
Driver and Front Passenger Side-impact Airbags (SRS), seat-mounted	S	S	S
Front and Rear Side-curtain Airbags (SRS), roof-mounted	S	S	S
Front and Rear Crumple Zones	S	S	S
Hood-buckling Creases and Safety Stops	S	S	S
Tire Pressure Monitoring System (TPMS)	S	S	S
Energy-absorbing Steering Column	S	S	S
Active Front Head Restraints <sup>2</sup>	S	S	S
Front and Rear Adjustable Head Restraints	S	S	S
3-point Seatbelts, all seating positions	S	S	S
Front Seatbelts with Dual Pretensioners and Force Limiters	S	S	S
Adjustable Front-seat Shoulder Belt Anchors	S	S	S
Rear LATCH Child-seat-attachment System and Childproof Rear Door Locks	S	S	S

#### EXTERIOR FEATURES

Power Tilt-and-slide Sunroof with Sliding Sunshade and One-touch Open	–	P	O
Front Fog Lights	–	S	S
Remote Keyless Entry System with Alarm and Panic Alert	S	S	S
Windshield Wiper De-icer	–	–	S
Heated Power Side Mirrors	S	S	S
Rear Intermittent Wiper/Washer	S	S	S
Lower Bodyside Cladding	–	gray	bodyside
Bodycolor Door Handles and Side Mirrors	–	S	S
Roof Side Rails	S	S	S
Roof Cross Rails	O	O	O
Step Rails	O	O	O
Flip-up Tailgate Glass	S	S	S

#### OPTION PACKAGE

#### SE PACKAGE:

Premium Package: Power tilt-and-slide sunroof, heated front seats

#### INTERIOR FEATURES

Air Conditioning	O	S	S
Automatic Temperature Control with Outside Temperature Display and Air Quality System (AQS)	–	–	S
Power Door Locks and Windows with Driver's Auto-down	S	S	S
Multi-function Trip Computer (miles per gallon, distance to empty, average speed, trip time)	–	S	S
AM/FM/CD Audio System with 6 Speakers <sup>1</sup>	S	–	–
AM/FM/Cassette/CD/MP3 Audio System with 6 Speakers	–	S	–
AM/FM/In-dash 6-disc CD/MP3 Changer Audio System with 6 Speakers, Subwoofer, Equalizer	–	–	S
XM <sup>®</sup> Satellite Radio <sup>2,3</sup>	S	S	S
Auxiliary Audio Input Jack <sup>2</sup>	S	S	S
Bluetooth <sup>®</sup> Hands-free Phone System <sup>2,4</sup>	O	O	O
Electrochromic Auto-dimming Rearview Mirror with Compass	–	–	S
Seating Surfaces	cloth	premium cloth	leather
8-way Adjustable Driver Seat with Lumbar Support / 4-way Adjustable Fold-flat Passenger Seat	S	S	S
Heated Front Seats	–	P	S
60/40 Split Fold-flat Rear Seatback	S	S	S
Cruise Control	A/T only	S	S
Leather-wrapped Steering Wheel and Shift Knob	–	S	S
Adjustable-height Center Console with Armrest and Two-tier Storage	S	S	S
Overhead Console with Sunglass Holder and Maplights	S	S	S
Rear Center Armrest with Cupholders	S	S	S
Door Map Pockets with Large Bottle Holders, front and rear	S	S	S
Retractable Cargo Cover	–	–	S
Carpeted Floor Mats	O	O	O



WHEEL CHOICES



16-INCH GLS ALLOY WHEEL



16-INCH SE/LIMITED ALLOY WHEEL

ENGINE	GLS	SE	LIMITED
Drive Configuration: Front-wheel Drive	S	S	S
4-wheel-drive System with Driver-selectable Lock	–	0	0
5-speed Manual Transmission	S	–	–
4-speed Automatic Transmission with SHIFTRONIC	0 <sup>5</sup>	S	S
Final Drive Ratio (MT/AT)	4.533/4.626	–/4.407	–/4.407

**DRIVETRAIN/TRANSMISSION**

Drive Configuration: Front-wheel Drive	S	S	S
Manual Transmission: 5-speed	S	B&M <sup>®</sup> Racing Sport Shifter	S
Automatic Transmission: Electronic 4-speed with Overdrive and Lock-up Torque Converter	0	0	0
Final Drive Ratio (MT/AT)	4.056/4.041	4.056/4.041	4.056/4.041

**BODY/SUSPENSION/CHASSIS**

Body Type: 5-passenger Crossover Utility Vehicle	S	S	S
Unibody Construction	S	S	S
4-wheel Independent Suspension: MacPherson-strut front, multi-link rear	S	S	S
4-wheel Disc Brakes, front ventilated	S	S	S
Power Rack-and-pinion Steering	S	S	S
Turning Diameter (ft.), curb-to-curb	35.4	35.4	35.4
16-inch, 5-spoke Alloy Wheels with P215/65R Tires	S	–	–
16-inch, 5-double-spoke Alloy Wheels with P235/60R Tires	–	S	S

**EXTERIOR DIMENSIONS**

Wheelbase (in.)	103.5	103.5	103.5
Length (in.)	170.3	170.3	170.3
Width (in.)	70.7	72.1	72.1
Height (in.), including roof side rails	68.1	68.1	68.1
Track (in.), front/rear	60.6/60.6	61.0/61.0	61.0/61.0
Curb Weight (lbs.), manual transmission	3240	–	–
Curb Weight (lbs.), automatic transmission (2WD/4WD)	3266/–	3370/3548	3370/3548
Minimum Ground Clearance (in.)	7.7	7.7	7.7

**INTERIOR DIMENSIONS**

Head Room (in.), front/rear	40.3/38.8	40.3/38.8	40.3/38.8
Leg Room (in.), front/rear	42.1/37.2	42.1/37.2	42.1/37.2
Shoulder Room (in.), front/rear	56.6/56.3	56.6/56.3	56.6/56.3
Hip Room (in.), front/rear	52.4/51.2	52.4/51.2	52.4/51.2
Cargo Volume (cu. ft.), rear seat up/down	22.7/65.5	22.7/65.5	22.7/65.5
Passenger Volume (cu. ft.)	102.6	102.6	102.6

**EPA MILEAGE ESTIMATES<sup>6</sup>/FUEL CAPACITY**

Manual Transmission (city/highway)	20/25	–	–
Automatic Transmission (city/highway), 2WD (4WD)	19/25 (–)	18/24 (17/23)	18/24 (17/23)
Fuel-tank Capacity (gal.)	15.3	17.2	17.2

<sup>1</sup>Limited availability. <sup>2</sup>Later availability. <sup>3</sup>XM deletes cassette. XM<sup>®</sup> Satellite Radio requires XM subscription sold separately after first three trial months. All fees and programming subject to change. Traffic and weather channels only available in 21 metropolitan markets. See your dealer for details. XM service only available in the 48 contiguous United States. The XM name is a registered trademark of XM Satellite Radio Inc. All other trademarks are property of their respective owners. <sup>4</sup>Bluetooth hands-free phone system replaces sunglass holder. <sup>5</sup>Includes air conditioning and cruise control. <sup>6</sup>EPA estimates for comparison. Your actual mileage will vary with options, driving conditions, driving habits and vehicle's condition.

While the information contained in this brochure was correct at time of printing, specifications and equipment can change. Feature comparisons based on competitor models available at time of printing. No warranty or guarantee is being extended in this brochure, and Hyundai reserves the right to change product specifications and equipment at any time without incurring obligations. Some vehicles are shown with optional equipment. Specifications apply to U.S. vehicles only. Please contact your Hyundai dealer for current vehicle specifications.