

■ **GO WITH THE FLOW.** It's easy in the all-new 2005 Hyundai Tucson. After all, the ready-for-anything Tucson gives you years of carefree adventure with America's Best Warranty™* — proof that we stand behind the quality of our vehicles with a warranty that's so impressive, it's unsurpassed by any other car company. Which means you're free to go wherever the day takes you.

- **10-YEAR / 100,000-MILE**
POWERTRAIN PROTECTION
- **5-YEAR / 60,000-MILE**
BUMPER-TO-BUMPER COVERAGE
- **7-YEAR / UNLIMITED MILES**
ANTI-PERFORATION WARRANTY
- **5-YEAR / UNLIMITED MILES**
24-HOUR ROADSIDE ASSISTANCE

**2005 TUCSON /
AMERICA'S BEST WARRANTY**

01



*See dealer for LIMITED WARRANTY details.

LX IN NAUTICAL BLUE



■ THE SPONTANEOUS LIFE. With the Tucson, you're ready to live it. This all-new SUV gives you remarkably flexible cargo, storage and seating options — as well as all the comfort, bold styling and spirited performance you need. So whether you're taking a spur-of-the-moment road trip or just loading up on sporting goods, the Tucson makes it both easy and fun. Isn't that what spontaneity is all about?

GL IN OBSIDIAN BLACK

2005 TUCSON / OVERVIEW

02



LX IN BEIGE LEATHER



SUNROOF

Available on the GLS and LX, a power tilt-and-slide sunroof allows a healthy dose of fresh air into the cabin while brightening the interior with natural light.



POWER CONTROLS

Power door locks, heated mirrors and windows with driver's auto-down feature are standard on all models, proving that just because the Tucson is rugged on the outside, doesn't mean it has to be rugged on the inside.



PREMIUM AUDIO SYSTEMS

Any journey is made better with great-sounding music. That's why the GLS features an AM/FM/CD/Cassette/MP3 audio system and the LX has an AM/FM/Cassette with a 6-disc in-dash CD changer, plus subwoofer and equalizer.



- COMFORTABLE SEATING FOR FIVE ADULTS WITH GENEROUS FRONT AND REAR LEG ROOM
- 8-WAY ADJUSTABLE DRIVER'S SEAT WITH A DUAL HEIGHT FEATURE
- REAR SEAT CENTER ARMREST WITH TWO CUPHOLDERS PROVIDES COMFORT AND CONVENIENCE
- THE LEATHER-WRAPPED STEERING WHEEL ADDS A TOUCH OF LUXURY IN THE GLS AND LX

2005 TUCSON / COMFORT

04



- 60/40 SPLIT FOLD-FLAT REAR SEATBACK PROVIDES VERSATILE CARGO SPACE
- EASY-TO-CLEAN, DURABLE COMPOSITE PLASTIC CARGO FLOOR IS READY TO HAUL YOUR GEAR
- HEIGHT-ADJUSTABLE CENTER CONSOLE WITH ARMREST AND 2-TIER STORAGE
- THREE 12-VOLT POWER OUTLETS LET YOU BRING YOUR TOYS ALONG



- FRONT PASSENGER SEAT FOLDS FULLY FLAT BOTH FORWARD AND BACK WARD WITH EASE
- SIX CARGO NET HOLDERS AND SIX FLUSH-MOUNT METAL TIE-DOWN ANCHORS PROVIDE A VARIETY OF VERSATILE STORAGE OPTIONS
- FRONT AND REAR DOOR PANELS HAVE LARGE MAP POCKETS AND BIG BOTTLE HOLDERS
- SECTIONAL TRAY UNDER CARGO FLOOR ORGANIZES LOOSE ITEMS



LX IN SAHARA SILVER



ENGINE

The 2.7-liter, DOHC 24-valve all-aluminum V6 engine delivers 173 horsepower and 178lb.-ft. of torque, giving the Tucson GLS and LX the dynamic performance you need.



FOG LIGHTS

The Tucson GLS and LX models come standard with attractive and uniquely shaped reflector-type front fog lights, which improve the driver's visibility in inclement weather conditions.



TRANSMISSION

The electronically controlled 4-speed automatic transmission with SHIFTRONIC[®] gives you the option of clutchless manual shifting for a sportier, more active driving experience.



4-WHEEL DRIVE

The Tucson's advanced electronic on-demand system produces four-wheel traction, while the driver-selectable 4WD lock provides a 50/50 torque split between front and rear wheels.



LX IN BEIGE LEATHER

■ **SAFETY FIRST.** The Tucson's impressive active and passive safety systems include side-curtain airbags¹, a standard feature not found on its competitors. There's also Electronic Stability control w/ traction control, ABS, front seatbelt pretensioners, rear LATCH child-seat attachment system and childproof rear door locks. All further enhanced by reinforced front crumple zones and an energy-absorbing steering column.

REINFORCED DOOR BEAMS

The Tucson's reinforced side-impact door beams provide added protection, while its tough high-tensile steel uni-body construction is designed for optimum structural integrity.



SIX AIRBAGS

The Tucson's standard class-leading airbag system includes dual front airbags, front seat-mounted side-impact airbags and front and rear roof-mounted side-curtain airbags.

DUAL SEATBELT PRETENSIONERS

Upon sensing an impact, the dual front seatbelt pretensioners tighten the belt across the shoulder as well as the lap to reduce forward movement and keep the occupant in place.



¹ The Supplemental Restraint (airbag) System (SRS) is designed to work with the 3-point seatbelt system. The SRS deploys in certain frontal and/or side-impact conditions where significant injury is likely. The SRS is not a substitute for seatbelts, which should be worn at all times. Children under the age of 13 should be restrained securely in the rear seat. NEVER place a rear-facing child seat in the front seat of a vehicle that has a passenger-side airbag.

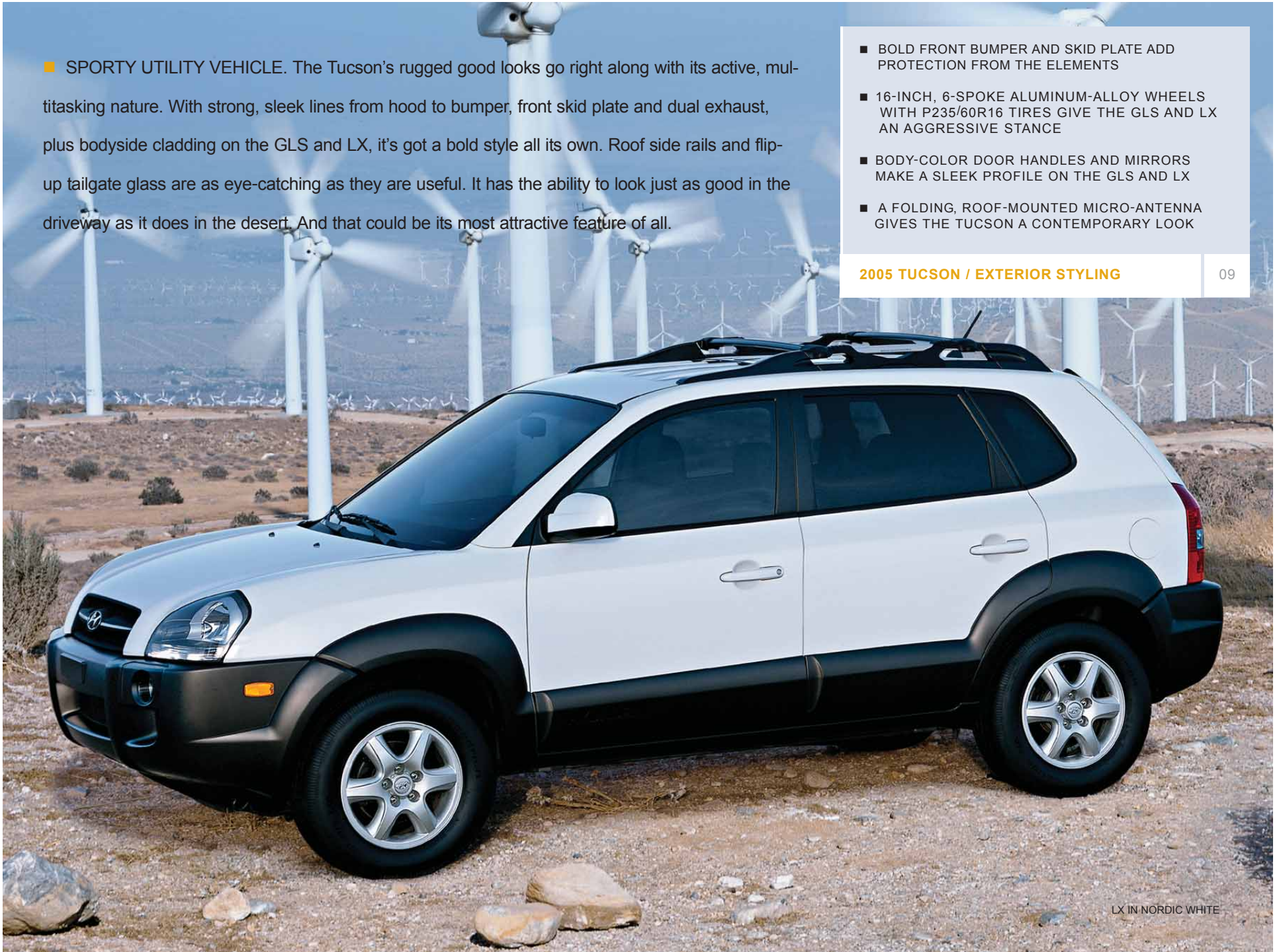
² The Electronic Stability Program (ESP) and the Traction Control System (TCS) are meant to enhance conscientious driving habits and are not substitutes for safe driving practices.

■ **SPORTY UTILITY VEHICLE.** The Tucson's rugged good looks go right along with its active, multitasking nature. With strong, sleek lines from hood to bumper, front skid plate and dual exhaust, plus bodyside cladding on the GLS and LX, it's got a bold style all its own. Roof side rails and flip-up tailgate glass are as eye-catching as they are useful. It has the ability to look just as good in the driveway as it does in the desert. And that could be its most attractive feature of all.

- BOLD FRONT BUMPER AND SKID PLATE ADD PROTECTION FROM THE ELEMENTS
- 16-INCH, 6-SPOKE ALUMINUM-ALLOY WHEELS WITH P235/60R16 TIRES GIVE THE GLS AND LX AN AGGRESSIVE STANCE
- BODY-COLOR DOOR HANDLES AND MIRRORS MAKE A SLEEK PROFILE ON THE GLS AND LX
- A FOLDING, ROOF-MOUNTED MICRO-ANTENNA GIVES THE TUCSON A CONTEMPORARY LOOK

2005 TUCSON / EXTERIOR STYLING

09



LX IN NORDIC WHITE

TUCSON SPECIFICATIONS

TUCSON GL

STANDARD FEATURES INCLUDE:

- 2.0-LITER, 16-VALVE, DOHC 4-CYLINDER ENGINE WITH CONTINUOUSLY VARIABLE VALVE TIMING (CVT)
- 5-SPEED MANUAL TRANSMISSION
- ELECTRONIC STABILITY CONTROL PROGRAM W/ TRACTION CONTROL & ABS
- DUAL FRONT AIRBAGS
- FRONT SEAT-MOUNTED SIDE-IMPACT AIRBAGS
- FRONT AND REAR ROOF-MOUNTED SIDE-CURTAIN AIRBAGS
- FULLY INDEPENDENT SUSPENSION
- 5-SPOKE, 16-INCH, ALUMINUM ALLOY WHEELS WITH P215/65R16 TIRES
- REMOTE KEYLESS ENTRY SYSTEM WITH ALARM
- NON-CFC AIR CONDITIONING
- AM/FM/CD AUDIO SYSTEM WITH SIX SPEAKERS
- PRIVACY GLASS
- POWER WINDOWS, DOOR LOCKS AND HEATED SIDE MIRRORS
- CRUISE CONTROL
- 60/40 SPLIT FOLD-FLAT REAR SEATBACK
- REAR INTERMITTENT WIPER/WASHER
- REAR CARGO COVER AND TRAY
- ROOF SIDE RAILS
- FLOOR MATS



TUCSON GLS

INCLUDES ALL TUCSON GL STANDARD FEATURES PLUS:

- 2.7-LITER, 24-VALVE, DOHC V6 ENGINE
- 4-SPEED AUTOMATIC TRANSMISSION WITH SHIFTRONIC®
- 6-SPOKE, 16-INCH, ALUMINUM-ALLOY WHEELS WITH P235/60R16 TIRES
- FOG LIGHTS
- WINDSHIELD WIPER DEICER
- AM/FM/CD/CASSETTE/MP3 AUDIO SYSTEM WITH SIX SPEAKERS
- LEATHER-WRAPPED STEERING WHEEL AND SHIFTER
- METALGRAIN INTERIOR TRIM
- ILLUMINATED IGNITION SURROUND
- CARGO NET
- DOOR COURTESY LIGHTS
- BODY-COLOR DOOR HANDLES AND SIDE MIRRORS
- BODYSIDE CLADDING
- REAR CHROME ACCENT
- DUAL CHROME-TIPPED EXHAUST OUTLETS



TUCSON LX

INCLUDES ALL TUCSON GLS STANDARD FEATURES PLUS:

- LEATHER SEATING SURFACES
- HEATED FRONT SEATS
- AM/FM/CD/CASSETTE AUDIO SYSTEM WITH IN-DASH 6-DISC CD CHANGER AND EQUALIZER
- SEVEN AUDIO SPEAKERS INCLUDING A SUBWOOFER



| ENGINE | TUCSON GL | TUCSON GLS | TUCSON LX |
|---|-------------------------|---------------|---------------|
| Type | Inline 4 | V6 | V6 |
| Displacement (liters) | 2.0 | 2.7 | 2.7 |
| Horsepower @ rpm (SAE net) | 140 @ 6000 | 173 @ 6000 | 173 @ 6000 |
| Torque (lb.-ft. @ rpm) | 136 @ 4500 | 178 @ 4000 | 178 @ 4000 |
| Compression Ratio | 10.1:1 | 10.0:1 | 10.0:1 |
| Valve Train | DOHC with CVT; 16-valve | DOHC 24-valve | DOHC 24-valve |
| Fuel System: Multi-port Programmed Fuel Injection | S | S | S |
| Ignition System: Electronic | S | S | S |

DRIVETRAIN

| | | | |
|---|-------------|----------|----------|
| Type: Front Wheel Drive | S | S | S |
| 4-Wheel Drive System with Manual Lock | O (5M only) | O | O |
| Manual Transmission: 5-speed | S | - | - |
| 4-speed Automatic Transmission with SHIFTRONIC® | O | S | S |
| Final Drive Ratio (MT/AT) | 4.533/4.626 | - /4.407 | - /4.407 |

BODY/SUSPENSION/CHASSIS

| | | | |
|--|--------------------|--------------------|--------------------|
| Body Type: Five Passenger Sport Utility Vehicle | S | S | S |
| Body Construction: Unibody | S | S | S |
| Front Suspension: MacPherson Struts; Rear Suspension: Multi-link | S | S | S |
| Power-assisted Four-wheel Disc Brakes | S | S | S |
| Four-wheel Anti-lock Braking System (ABS) | S | S | S |
| Power-assisted Rack-and-Pinion Steering | S | S | S |
| Turning Diameter, Curb-to-curb (ft.) | 35.4 | 35.4 | 35.4 |
| 16-inch Aluminum-alloy Wheels/Tires | 5-spoke/P215/65R16 | 6-spoke/P235/60R16 | 6-spoke/P235/60R16 |

EXTERIOR DIMENSIONS

| | | | |
|--|------------|------------|------------|
| Wheelbase (in.) | 103.5 | 103.5 | 103.5 |
| Length (in.) | 170.3 | 170.3 | 170.3 |
| Width (in.) | 70.7 | 72.1 | 72.1 |
| Height (in.) (including Roof Rails) | 66.1(68.1) | 66.1(68.1) | 66.1(68.1) |
| Track (in., front/rear) | 60.6/60.6 | 61.0/61.0 | 61.0/61.0 |
| Curb Weight (lbs.) Manual Transmission (2WD/4WD) | 3240/3425 | - | - |
| Automatic Transmission (2WD/4WD) | 3266/ - | 3370/3548 | 3370/3548 |

INTERIOR DIMENSIONS

| | | | |
|---|-----------|-----------|-----------|
| Head Room (in., front/rear) | 40.3/38.8 | 40.3/38.8 | 40.3/38.8 |
| Leg Room (in., front/rear) | 42.1/37.2 | 42.1/37.2 | 42.1/37.2 |
| Shoulder Room (in., front/rear) | 56.6/56.3 | 56.6/56.3 | 56.6/56.3 |
| Hip Room (in., front/rear) | 52.4/51.2 | 52.4/51.2 | 52.4/51.2 |
| Cargo Volume (cu. ft., rear seat up/down) | 22.7/65.5 | 22.7/65.5 | 22.7/65.5 |
| Passenger Volume (cu. ft.) | 102.6 | 102.6 | 102.6 |

EPA MILEAGE ESTIMATES*/FUEL CAPACITY

| | | | |
|---|---------------|---------------|---------------|
| 5-speed Manual (City/Highway) (2WD/4WD) | 22/27 / 21/26 | - | - |
| Automatic (City/Highway) (2WD/4WD) | 22/27 / - | 20/26 / 19/24 | 20/26 / 19/24 |
| Fuel Tank Capacity (gal.) | 15.3 | 17.2 | 17.2 |

*EPA estimates for comparison. Your actual mileage will vary with options, driving conditions, driving habits and vehicle's condition.

**Delayed availability

***Rear-seat lower anchors (2 outboard) and rear-seat tether anchors (3)

S = Standard Feature O = Optional Feature - = Not Available

TUCSON ACCESSORIES

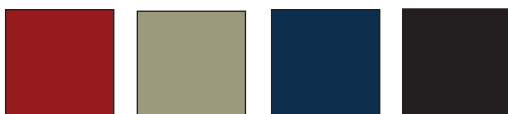
You should always use genuine Hyundai parts and accessories, which meet strict standards for quality and durability.



Let the fresh air in while keeping the wind out, when your Tucson's sunroof is fitted with a wind deflector.

Front and rear mudguards help keep your Tucson clean, while also offering protection from loose road debris.

EXTERIOR COLORS



MESA RED
(BEIGE OR
GRAY
INTERIOR)

SAHARA
SILVER
(BEIGE OR
GRAY
INTERIOR)

NAUTICAL
BLUE
(BEIGE OR
GRAY
INTERIOR)

OBSIDIAN
BLACK
(BEIGE OR
GRAY
INTERIOR)



ALPINE
FROST
(BEIGE OR
GRAY
INTERIOR)

NORDIC
WHITE
(BEIGE OR
GRAY
INTERIOR)

GOLDEN
SAND
(BEIGE
INTERIOR)

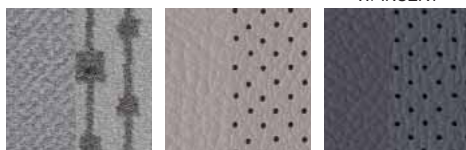
INTERIOR COLORS



GL BEIGE CLOTH
W/ INSERT

GL GRAY CLOTH
W/ INSERT

GLS BEIGE
DELUXE CLOTH
W/ INSERT



GLS GRAY
DELUXE CLOTH
W/ INSERT

LX BEIGE
LEATHER W/
INSERT

LX GRAY
LEATHER W/
INSERT

SAFETY FEATURES

| | TUCSON GL | TUCSON GLS | TUCSON LX |
|--|-----------|------------|-----------|
| Electronic Stability Control Program w/ Traction Control System | S | S | S |
| Driver and Front Passenger Airbags (SRS) | S | S | S |
| Driver and Front Passenger Side-impact Airbags (SRS), seat-mounted | S | S | S |
| Front and Rear Side-curtain Airbags, roof-mounted | S | S | S |
| Front and Rear Crumple Zones | S | S | S |
| Hood-buckling Creases and Safety Stops | S | S | S |
| Energy-absorbing Steering Column | S | S | S |
| Front and Rear Adjustable Head Restraints | S | S | S |
| 3-point Front Seatbelts with Dual Pretensioners and Force Limiters | S | S | S |
| Adjustable Front Seatbelt Anchors | S | S | S |
| Rear 3-point Seatbelts, all seating positions | S | S | S |
| Rear LATCH Child-seat Attachment System*** for 2 child seats | S | S | S |
| Childproof Rear Door Locks | S | S | S |

EXTERIOR FEATURES

| | TUCSON GL | TUCSON GLS | TUCSON LX |
|--|-----------|------------|------------|
| Power Tilt-and-slide Sunroof with Sliding Sunshade | - | O | O |
| Fog Lights | - | S | S |
| Remote Keyless Entry System with Alarm | S | S | S |
| Door Handles and Heated Dual Power Side Mirrors | Black | Body-color | Body-color |
| Lower Bodyside Accent-color Cladding | - | S | S |
| Variable Intermittent Windshield Wipers/Washer | S | S | S |
| Intermittent Rear Window Wiper/Washer | S | S | S |
| Windshield Deicer | - | S | S |
| Rear Window Defroster with Timer | S | S | S |
| Dual Chrome-Tipped Exhaust Outlets | - | S | S |
| Flip-up Rear Glass | S | S | S |
| Roof Rack Side Rails | S | S | S |
| Roof Rack Cross Rails | O | O | O |

INTERIOR FEATURES

| | TUCSON GL | TUCSON GLS | TUCSON LX |
|---|-----------|-----------------|-----------------|
| Non-CFC Air Conditioning | S | S | S |
| Power Door Locks and Windows with Driver's Auto-down | S | S | S |
| Tachometer | S | S | S |
| Cruise Control | S | S | S |
| AM/FM/CD Audio System with 6 Speakers | S | - | - |
| AM/FM/CD/Cassette/MP3 Audio System with 6 Speakers | - | S | - |
| AM/FM/Cassette/In-dash 6-disc CD Audio System, 6 Speakers, Subwoofer, Equalizer | - | O | S |
| Seating Surface | Cloth | Deluxe Cloth | Leather |
| 8-way Adjustable Driver Seat/Fold-flat Passenger Seat | S | S | S |
| Heated Front Seats | - | - | S |
| 60/40 Split Fold-flat and Reclining Rear Seatback | S | S | S |
| Tilt Steering Wheel | S | Leather-wrapped | Leather-wrapped |
| Adjustable Height Center Console with Armrest and 2-tier Storage | S | S | S |
| Overhead Console with Sunglass Storage and Maplights | S | S | S |
| Cupholders (2 front/2 rear) | S | S | S |
| Door Map Pockets with Large Bottle Holders (front and rear) | S | S | S |
| Driver and Front Passenger Vanity Mirrors | S | S | S |
| Cargo Area Light | S | S | S |
| Cargo Net | - | S | S |
| Removable Cargo Cover and Tray/Under-cargo-floor Storage Tray | S | S | S |
| Floor Mats | S | S | S |

Some accessories are not available on some models. While the information contained in this brochure was correct at time of printing, specifications and equipment can change. No warranty or guarantee is being extended in this brochure, and Hyundai reserves the right to change product specifications and equipment at any time without incurring obligations. Some vehicles are shown with optional equipment. Specifications apply to U.S. vehicles only. Please contact your Hyundai dealer for current vehicle specifications.

S = Standard Feature O = Optional Feature - = Not Available