

2020  
**ESCAPE**

S | SE | SE SPORT | SEL | TITANIUM





# BUILT FOR MEMORABLE MOMENTS.

Spontaneity. It's what makes life more... extraordinary. Adventure beckons at a moment's notice. To help you respond, we reimagined what it means to ESCAPE. Then we built it. Giving it a spacious, adaptable interior. Advanced connectivity. Proven capability. Plus, new hybrid and plug-in hybrid<sup>1</sup> models that offer you even more freedom to roam. Like you, we don't just dream about improving the future. We make it happen. We've been doing it for over 116 years, long before highways even existed. So we know how to rise to a challenge. Then, as now, our name anchors everything we build. Introducing the all-new 2020 Ford Escape.



**SEL Plug-In Hybrid. Rapid Red Metallic Tinted Clearcoat. Titanium Hybrid. Star White Metallic Tri-coat. Available equipment.**

<sup>1</sup>Coming Spring 2020. <sup>2</sup>Actual ranges and mileage will vary. Range calculations from fuel economy.gov. Escape 1.5L FWD; EPA-estimated range of 441 miles. 14.7-gallon tank. EPA-estimated ratings of 27 city/33 hwy/30 combined mpg. Escape 1.5L AWD; EPA-estimated range of 412 miles. 14.7-gallon tank. EPA-estimated ratings of 26 city/31 hwy/28 combined mpg. Escape 2.0L AWD; EPA-estimated range of 411 miles. 15.8-gallon tank. EPA-estimated ratings of 23 city/31 hwy/26 combined mpg. Escape Limited 2.5L Hybrid FWD; EPA-estimated range of 582 miles. 14.2-gallon tank. EPA-estimated ratings of 44 city/37 hwy/41 combined mpg. Escape 2.5L Hybrid AWD; EPA-estimated range of 568 miles. 14.2-gallon tank. EPA-estimated ratings of 43 city/37 hwy/40 combined mpg. Final ranges not available for Escape SE Sport FWD or Escape Plug-In Hybrid. Coming Spring 2020.

4

POWERTRAIN CHOICES

EPA-ESTIMATED RANGE OF AT LEAST

400

MILES PER TANK ON EVERY MODEL<sup>2</sup>

NEW 8-SPEED AUTOMATIC TRANSMISSION

Available

5

SELECTABLE DRIVE MODES

2

ALL-NEW HYBRID MODELS INCLUDING A PLUG-IN<sup>1</sup>

ESCAPE HYBRID AWD

EPA-ESTIMATED RATING<sup>2</sup>

40

COMB MPG





EMPOWERS YOU TO ROAM.



[ 1.5L ECOBOOST WITH AUTO START-STOP TECHNOLOGY ]

GO FURTHER WITH LESS

To help conserve fuel, the new 1.5L EcoBoost can sense when a cylinder isn't needed and shut it down automatically. The system can activate or deactivate a cylinder in milliseconds to maintain a seamless ride.

Standard on S, SE and SEL FWD (AWD optional)

[ 2.0L ECOBOOST® WITH AUTO START-STOP TECHNOLOGY ]

GO QUICKLY

Impressive horsepower and torque from this turbocharged gem result in spirited acceleration and robust passing power, contributing to its fun-to-drive nature. For an even more engaging drive, the quick-shifting 8-speed SelectShift® automatic transmission puts control at your fingertips with steering wheel-mounted paddle shifters.

Optional on SEL and Titanium

[ 2.5L ATKINSON-CYCLE I-4 HYBRID ]

MAXIMIZE YOUR RANGE

With a top speed of 85 mph<sup>1</sup> while in electric-only mode, and an EPA-estimated rating of 40 combined mpg,<sup>2</sup> Escape Hybrid AWD delivers. A new eCVT transmission is paired with the 2.5L engine, featuring electric launch for an engaging driving experience.

Standard on SE Sport and Titanium FWD (AWD optional)

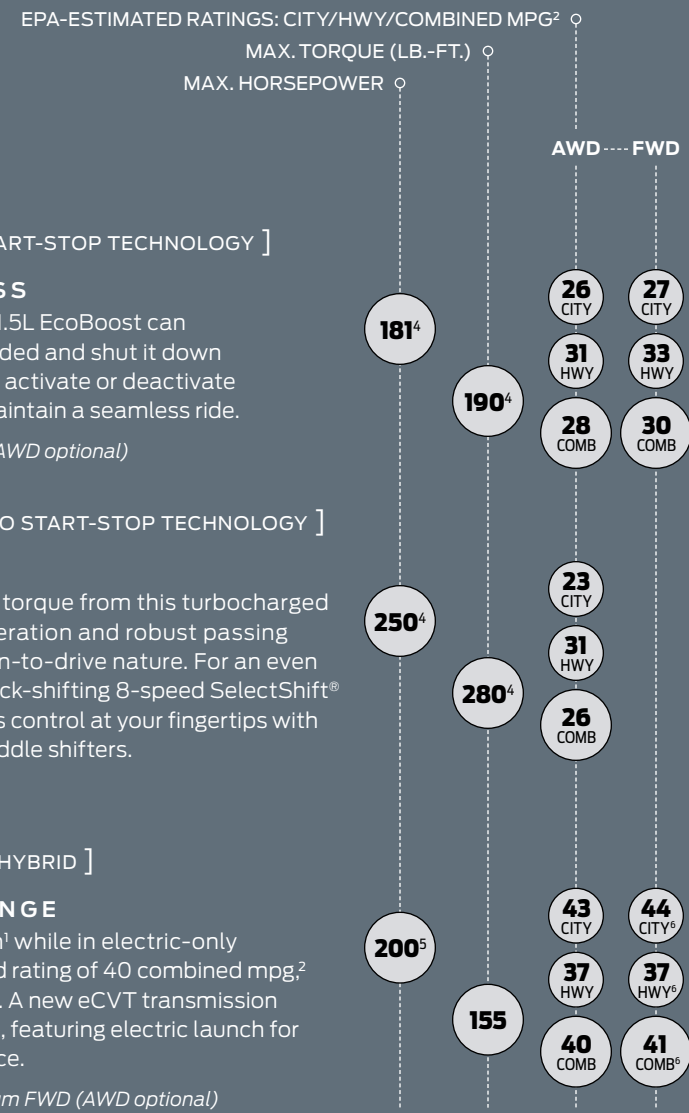
[ 2.5L ATKINSON-CYCLE I-4 PLUG-IN HYBRID<sup>3</sup> ]

EXTEND YOUR OPTIONS

With its driver's side charge port and standard charging cord, Escape Plug-In Hybrid gives you the option to plug in to charge up the electric battery – at home, work, and even out shopping.

Standard on SE, SEL and Titanium Plug-in Hybrid FWD

Titanium Hybrid. Star White Metallic Tri-coat. SEL Plug-In Hybrid. Rapid Red Metallic Tinted Clearcoat. Both with available equipment. <sup>1</sup>Always obey posted speed limits. <sup>2</sup>Actual mileage will vary. <sup>3</sup>Coming Spring 2020. <sup>4</sup>Horsepower and torque ratings based on premium fuel per SAE J1349® standard. Your results may vary. <sup>5</sup>Total combined system net horsepower. <sup>6</sup>Escape Limited Hybrid FWD. Final numbers not available for Escape SE Sport FWD or Escape Plug-In Hybrid. Coming Spring 2020. Torque, horsepower and EPA-estimated fuel economy ratings are independent attributes and may not be achieved simultaneously.





#### TRAVELS WELL

Sport contour bucket seats and acoustic-laminate side-window glass create a comfortable front-row environment in Titanium.

#### INFORMS SMARTLY

The available head-up display\* on Titanium projects vehicle speed and other vital information onto a 6" wide screen that pops up below the windshield in the driver's line of sight.

#### DIALS IN SPACE

A nicely calibrated rotary gear shift dial on the streamlined center console frees up space to create a roomier front-row experience.

**Titanium. Ebony leather-trimmed interior. Available equipment.** \*Don't drive while distracted. See owner's manual for details and system limitations.

10

#### HIGH-PERFORMANCE SPEAKERS

Can transform 575 watts of digitally processed sound from the available B&O Sound System into pure audio bliss, filling your cabin with the music you love.

8"

#### LCD TOUCHSCREEN

Allows smartphone users to view the Waze™ app here, thanks to SYNC® 3 AppLink®. Available

12.3"

#### DIGITAL INSTRUMENT CLUSTER

Features customizable display with 3D animation. Available



Increases throttle response, provides quicker shifts for a more aggressive feel, and allows the transmission to hold shifts longer to help Escape accelerate faster when shifting. For more "sporty" on-road driving.



You'll probably spend the most time here. Ideal for everyday driving on wet or dry paved roads. A balance of excitement and convenience.



For better handling on surfaces covered with ice, water, grass or gravel, this mode adjusts the pedal response and traction control.



Exactly as it sounds. Helps maximize efficiency and increase driving range.



Adjusts the transmission shift schedule, pedal response, traction control and driveline configuration for better handling in deep snow or sand. Included with available Intelligent AWD only.



## DELIVERS A MODE FOR EACH ROAD.

Create the ride experience you desire, or the one that conditions demand, with new Selectable Drive Modes. Choose your mode and the system adjusts traction control, steering and pedal response, and available Intelligent AWD to help provide a remarkable driving experience. 3D animations (shown left) on the available 12.3" digital instrument cluster change based on the drive mode selected.

Plug-In Hybrid<sup>1</sup> features 4 EV modes, allowing you to decide how you want to use its electric power. In Auto EV, the vehicle decides whether to run on gas or electric power. EV Now mode is for all-electric operation. EV Later preserves plug-in energy for later use. In EV Charge mode, drivers can continue to charge the battery while driving, and generate electric-only miles to use later.

**Titanium. Sedona Orange. Available equipment.** <sup>1</sup>Coming Spring 2020.



FORD CO-PILOT360

Standard on every 2020 Escape



PRE-COLLISION ASSIST WITH AUTOMATIC EMERGENCY BRAKING

We should all drive defensively. By scanning the road ahead, this feature can alert you to potential collisions with vehicles or pedestrians detected in your path. If an impact is imminent and you don't take action, brakes can apply automatically.<sup>2</sup> It's designed to only activate when needed.



BLIS® WITH CROSS-TRAFFIC ALERT

Changing lanes demands your full attention. BLIS (Blind Spot Information System) can help by alerting you to vehicles detected in your blind spots. Cross-Traffic Alert helps by detecting and alerting you to traffic behind your vehicle as you're slowly backing up.



LANE-KEEPING SYSTEM

It happens. Listening to your favorite podcast, you wander too close to your lane's edge. Our Lane-Keeping System<sup>3</sup> can help during a moment of distraction. If you drift out of your lane, it directs you with steering wheel torque to return, and can also alert you through vibration pulses. Stray a few times and a coffee cup icon lets you know it's time to take a break.



AUTO HIGH-BEAM HEADLAMPS

Sound familiar? You turn on high beams entering a dark stretch of road – then forget to turn them off as traffic approaches. Auto High-Beam Headlamps can detect poor lighting and switch them on for you. They can also sense oncoming headlamps and dim automatically for other drivers.



REAR VIEW CAMERA

Backing up requires a little multitasking. Our Rear View Camera provides a great view of what's behind your vehicle, helping you navigate Reverse with more confidence. It also helps when you're lining up a trailer.

FORD CO-PILOT360™ TECHNOLOGY  
READY WITH AN ASSIST.

From the driveway to the highway, our driver-assist features<sup>1</sup> are designed to help you feel confidently in command at the wheel of your Escape.



ADDITIONAL  
FORD CO-PILOT360 TECHNOLOGY<sup>1</sup>



ACTIVE PARK ASSIST 2.0

Never pass up a potential parking space again. Active Park Assist 2.0 makes it easy to park time after time – even in tight parallel or reverse perpendicular spots. After the system locates a potential spot, all you have to do is brake to a complete stop, shift into Neutral and hold down the Active Park Assist button – Escape takes care of the rest. Park Out Assist with side-sensing capability can help you confidently navigate out of a spot when someone's parked too close.

Standard on Titanium



ADAPTIVE CRUISE CONTROL (ACC) WITH STOP-AND-GO

There are few things as tedious as bumper-to-bumper traffic. ACC with Stop-and-Go can help you keep pace on your journey, slowing down or even stopping your vehicle if the traffic ahead has slowed or stopped. When things clear, it can resume your set speed.<sup>4</sup>

Standard on Titanium  
Available on SE, SE Sport and SEL



EVASIVE STEERING ASSIST<sup>5</sup>

We've all experienced it. Traffic is rolling along smoothly when suddenly, a vehicle in your path is stopped. To help avoid a potential collision, Evasive Steering Assist can provide extra assist to help you quickly steer around the vehicle.

Standard on Titanium  
Available on SE, SE Sport and SEL



VOICE-ACTIVATED NAVIGATION

Taking the wrong exit can put a serious dent in your day. Stay confidently on course with our Voice-Activated Touchscreen Navigation System, which features SiriusXM® Traffic and Travel Link® services<sup>6</sup> to help you avoid traffic, find fuel (gas or java), and so much more.

Standard on Titanium  
Available on SE, SE Sport and SEL

Available equipment shown. <sup>1</sup>Driver-assist features are supplemental and do not replace the driver's attention, judgment and need to control the vehicle. <sup>2</sup>Pre-Collision Assist with Automatic Emergency Braking can detect pedestrians, but not in all conditions and does not replace safe driving. See owner's manual for system limitations. <sup>3</sup>Lane-Keeping System does not control steering. <sup>4</sup>If stop is longer than 3 seconds, driver must intervene and press "RES" button or accelerator pedal to resume system operation. <sup>5</sup>Evasive Steering Assist does not control steering. <sup>6</sup>Certain restrictions, 3rd-party terms and data rates may apply. See footnote 1 on the "Your Tech, Your Way" pages, and your Ford Dealer for details.



**MAX. INTERIOR CAPACITIES<sup>1,2</sup>** [cu. ft.]  
Cargo volume behind front row: **65.4**  
Cargo volume behind rear row: **37.5** (max.)

**CONFIGURES SPACE TO YOUR ADVANTAGE.**

**MAXIMIZES CARGO SPACE**

With 37.5 cu. ft. of max. cargo space<sup>1,2</sup> with the sliding rear seat fully forward, a full-size dog crate can fit in the Escape cargo area. An available cargo shade that rises and lowers along with the liftgate helps keep items out of sight.

**BRIGHTENS YOUR DRIVE**

An available power, panoramic Vista Roof<sup>®</sup> can flood the Escape interior with natural light to benefit all passengers, while available ambient lighting can illuminate the door trim and media bin in your choice of 7 colors.

**KEEPS YOU CHARGED**

Available 12V powerpoints, USB ports and an available 110V/150W AC power outlet on the rear of the center console give you and your passengers plenty of opportunity to keep your devices charged and at the ready.

**MAX. INTERIOR DIMENSIONS<sup>1</sup>** [inches]

Front / Rear  
Head room: **40.0 / 39.3**  
Leg room (max.): **42.4 / 40.7**  
Hip room: **55.2 / 53.3**  
Shoulder room: **57.6 / 56.0**

**104**  
CU. FT.

Total passenger volume

Titanium. Ebony/Sandstone leather-trimmed interior. Available equipment. <sup>1</sup>EcoBoost<sup>®</sup> equipped models. <sup>2</sup>Cargo and load capacity limited by weight and weight distribution.



# ENCOURAGES YOU TO ESCAPE.

The original Escape debuted in the 2001 model year. In its first full year on sale, it became America's best-selling small SUV. In reinventing the Escape for 2020, this rich history gave us plenty to build on. While the world – and technology – have experienced rapid change over 19 years, the purpose of Escape remains the same: to help you embrace life's adventures with modern design and remarkable versatility. These are just some of the new features that will help.



A

**BEST-IN-CLASS MAXIMUM  
REAR-SEAT LEG ROOM  
WITH SLIDING SEATS<sup>1</sup>**

**SLIDING REAR SEATS**

**FORDPASS CONNECT™<sup>2</sup>  
WITH 4G LTE  
WI-FI HOTSPOT CAPABILITY**

B

**REAR CARGO AREA  
HAS ROOM FOR A  
FULL-SIZE PET CRATE<sup>3</sup>**

**ROTARY GEAR  
SHIFT DIAL**

**SPACIOUS GLOVE BOX CAN  
HOLD LAPTOP OR PURSE**



C

AVAILABLE

**HEAD-UP DISPLAY<sup>4</sup>**

**CARGO SHADE  
RISES AND LOWERS  
WITH LIFTGATE**

**PANORAMIC VISTA ROOF®**



<sup>1</sup>Class is Small Utilities based on Ford segmentation. Based on the 2nd-row seat in the most rearward position. Non-hybrid models only. <sup>2</sup>FordPass Connect (optional on select vehicles), the FordPass™ App, and complimentary Connected Service are required for remote features (see FordPass Terms for details). Connected service and features depend on compatible AT&T network availability. Evolving technology/cellular networks/vehicle capability may limit functionality and prevent operation of connected features. Connected service excludes Wi-Fi hotspot. Don't drive distracted or while using handheld devices. Use voice controls. <sup>3</sup>Can accommodate dog crate of 36" L x 23" W x 25" H. <sup>4</sup>Don't drive while distracted. See owner's manual for details and system limitations.





 SYNC® AppLink®

## YOUR TECH, YOUR WAY.

With seating for up to 5 and Wi-Fi hotspot capability, Ford Escape welcomes a vast array of smartphones, tablets, gaming systems and computers along for the ride. Plus, you can tap into the best in music, sports, comedy, news and talk with SiriusXM® inside your vehicle and on the go, with a 6-month All Access trial subscription¹. With our available Voice-Activated Touchscreen Navigation System, you'll also enjoy a 5-year subscription¹ to SiriusXM Traffic and Travel Link® services.

### COMMAND IT

With your voice and your choice of display. Available SYNC® 3 voice-activated technology² connects your tech with your Escape. Available SYNC 3 AppLink®³ (shown) gives you voice control of compatible mobile apps like Waze™ and Ford+Alexa.⁴ To see your phone's familiar interface on the big screen, take advantage of compatibility with Apple CarPlay®⁵ for your iPhone®, or Android Auto™⁵ for your Android™ smartphone.



androidauto

### CONTROL IT

Monitor and control your vehicle in incredibly powerful ways using the FordPass™ App alone or with FordPass Alexa Skill⁶ or FordPass Action through Google Assistant™ when equipped with FordPass Connect.™⁷ Complimentary remote features let you start, lock and unlock your vehicle from just about anywhere, including right from your wrist with your Apple Watch®. Use your app to find your vehicle, schedule starts, find parking,⁸ and check fuel and fluid levels. When you need important vehicle information, like Vehicle Health Alerts, service history and Warranty info, the FordPass App puts it at your fingertips. And, when it's time to bring your vehicle in for service, the app makes scheduling easy. Enjoy access to convenient services like Key by Amazon In-Car Delivery⁹ and peace of mind knowing roadside assistance is just a call or e-request away.¹⁰



### CONNECT IT

With in-vehicle Wi-Fi. Before the sand dries on your flip-flops, you and your friends can be posting beach photos through FordPass Connect⁷ with 4G LTE Wi-Fi hotspot capability. Its powerful antenna provides the ability to connect up to 10 devices at once¹¹ – inside of Escape and up to 50¹² away.



**Available equipment shown.** ¹All SiriusXM services require a subscription, sold separately by SiriusXM after the trial period. Fees and taxes apply. See SiriusXM Customer Agreement for complete terms at [www.siriusxm.com](http://www.siriusxm.com). All fees, content and features are subject to change. Traffic information not available in all markets. SiriusXM satellite service for 2020 model-year Ford vehicles is not available in Puerto Rico; SiriusXM streaming service is available for purchase. ²Don't drive while distracted. Use voice-operated systems when possible; don't use handheld devices while driving. Some features may be locked out while the vehicle is in gear. Not all features are compatible with all phones. ³Commands may vary by phone and AppLink software. ⁴Waze is available via iPhone with SYNC 3 and on Android Auto. Commands may vary by phone and AppLink software. Alexa requires available SYNC 3 AppLink. Certain Alexa functionality is dependent on smart phone and home technology. Don't drive while distracted or while using handheld devices. Use voice controls. Some features may be locked out while the vehicle is in gear. ⁵Requires device with active data service and compatible software. SYNC does not control 3rd-party products while in use. 3rd parties are solely responsible for their respective functionality. ⁶Don't drive while distracted or while using handheld devices. Use voice controls. Certain Alexa functionality is dependent on smart phone and home technology. ⁷FordPass Connect (optional on select vehicles), the FordPass App, and complimentary Connected Service are required for remote features (see FordPass Terms for details). Connected service and features depend on compatible AT&T network availability. Evolving technology/cellular networks/vehicle capability may limit functionality and prevent operation of connected features. Connected service excludes Wi-Fi hotspot. ⁸In select cities. ⁹FordPass App, compatible with select smartphone platforms, is available via a download. FordPass Connect service required (see FordPass Terms for more information). Message and data rates may apply. Check your availability at <https://amzn.to/2JnYmtz>. ¹⁰Roadside assistance is included for certain owners and available to everyone for a per-service fee. ¹¹Don't drive while distracted or while using handheld devices. Use voice controls.





## HANDLES CHALLENGES IN STRIDE.

With extensive use of lightweight, high-strength steel and high-strength boron steel, the all-new 2020 Ford Escape weighs in over 200 lbs. less than its predecessor. Along with new engines and an all-new suspension system with a new isolated rear subframe, these improvements allow you to blaze new trails in calm and comfort.

### MAINTAINS STABILITY

To help provide additional articulation (travel) for ride smoothness, the upgraded suspension design of Escape features an isolated rear subframe. Electric power-assisted steering offers greater assist at low speeds to help in parking and other maneuvers.

### SHIFTS SMOOTHLY

On hybrid and plug-in hybrid<sup>1</sup> models, our eCVT transmission delivers electric launch for an engaging driving experience. On gas-only models, a smooth and responsive 8-speed automatic transmission deftly balances efficiency with performance.

### PERFORMS SMARTLY

To help conserve fuel, the 1.5L EcoBoost<sup>®</sup> debuts cylinder deactivation, which can sense when a cylinder isn't needed and shut it down automatically. Designed to save fuel, All-Wheel-Drive (AWD) disconnect allows for rear driveline disconnection when the system detects available Intelligent AWD isn't needed.



### TOW UP TO 3,500 LBS.<sup>2</sup>

You can with the torque-rich 2.0L EcoBoost engine. Tow up to 2,000 lbs.<sup>2,3</sup> with the 1.5L EcoBoost. Escape Hybrid can tow up to 1,500 lbs.<sup>2,4</sup>

**SE Sport. Velocity Blue. Available equipment.** <sup>1</sup>Coming Spring 2020. <sup>2</sup>Max. towing of 3,500 lbs. with 2.0L EcoBoost and Class II Trailer Tow Package (not shown); max. towing of 2,000 lbs. with 1.5L EcoBoost and proper equipment (not shown); max. towing of 1,500 lbs. with 2.5L Hybrid and proper equipment (shown). Max. towing varies based on cargo, vehicle configuration, accessories and number of passengers. <sup>3</sup>Escape does not offer factory-installed towing equipment for this application: only available as dealer accessory. <sup>4</sup>Escape does not offer factory-installed towing equipment for this application: only available as aftermarket accessory.



S

FORDPASS CONNECT™

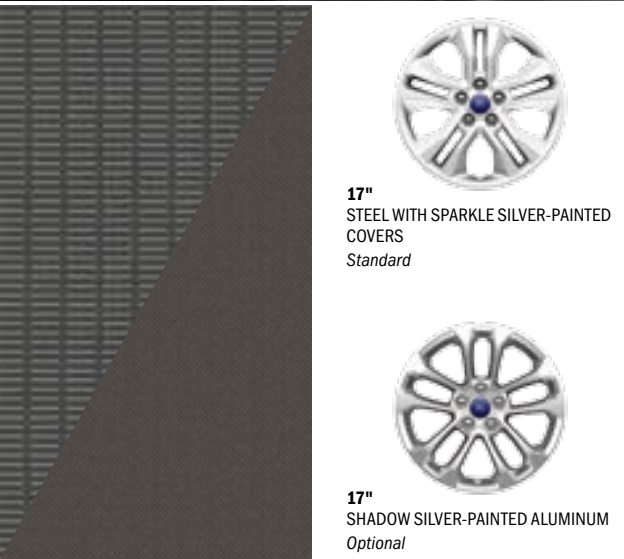
LED TAILLAMPS

FORD CO-PILOT360™

**Daily victories start here.** Turn the new rotary gear shift dial to Reverse. Before you're even out of your spot, the Rear View Camera<sup>1</sup> and the sensors from Cross-Traffic Alert<sup>1</sup> pick up a vehicle driving by in the parking garage. Bad morning, averted. On the road, a light rain makes the surface slick. Adjust the Selectable Drive Mode to Slippery to increase your control. Need to call the office before you arrive? SYNC® voice-activated technology<sup>2</sup> can place the call while your phone is still in your duffle bag. The day hasn't even begun, and you're already on top of your game. Thanks to the all-new Escape S.



**COLORS:** Desert Gold,<sup>3</sup> Velocity Blue,<sup>3</sup> Oxford White, Ingot Silver,<sup>3</sup> Dark Persian Green,<sup>3</sup> Magnetic,<sup>3</sup> Agate Black,<sup>3</sup> Sedona Orange<sup>3</sup>



**CLOTH SEATING SURFACES:** Dark Earth Gray

**Available equipment shown.** <sup>1</sup>Driver-assist features are supplemental and do not replace the driver's attention, judgment and need to control the vehicle. <sup>2</sup>Don't drive while distracted. Use voice-operated systems when possible; don't use handheld devices while driving. Some features may be locked out while the vehicle is in gear. Not all features are compatible with all phones. <sup>3</sup>Metallic. <sup>4</sup>FordPass Connect (optional on select vehicles), the FordPass App, and complimentary Connected Service are required for remote features (see FordPass Terms for details). Connected service and features depend on compatible AT&T network availability. Evolving technology/cellular networks/vehicle capability may limit functionality and prevent operation of connected features. Connected service excludes Wi-Fi hotspot. Don't drive distracted or while using handheld devices. Use voice controls. <sup>5</sup>FordPass App, for use with FordPass Connect, is available via download and compatible with select smartphone platforms. FordPass is on the App Store® and Google Play.™ Learn more at [www.fordpass.com](http://www.fordpass.com). Message and data rates may apply. <sup>6</sup>Always wear your safety belt and secure children in the rear seat.

**1.5L ECOBOOST® WITH AUTO START-STOP TECHNOLOGY**  
**8-SPEED AUTOMATIC TRANSMISSION**

**S STANDARD FEATURES:**

**MECHANICAL**

- Active grille shutters
- Electric power-assisted steering
- Front-wheel drive (FWD)
- Mini spare wheel and tire
- Power disc brakes with Anti-Lock Brake System (ABS)
- Selectable Drive Modes
- Torque Vectoring Control

**FORD CO-PILOT360 TECHNOLOGY**

- AdvanceTrac® with RSC® (Roll Stability Control™) and Curve Control
- Auto Hold
- Autolamp Automatic On/Off Headlamps
- Ford Co-Pilot360:** Pre-Collision Assist with Automatic Emergency Braking (AEB); BLIS® (Blind Spot Information System) with Cross-Traffic Alert; Lane-Keeping System; Auto High-Beam Headlamps; and Rear View Camera
- Post-Collision Braking

**APPEARANCE**

- Black grille surround, beltline moldings, upper window moldings, exterior door handles and power sideview mirrors
- Dual chrome exhaust tips
- Wiper-activated halogen headlamps with courtesy delay

**COMFORT & CONVENIENCE**

- 6-way manual driver's seat and 4-way manual front-passenger seat
- 12V powerpoints (3)
- 60/40 split-fold rear seat with slide and recline
- Cargo tie-down hooks (2) and grocery bag hooks (2)
- Configurable daytime running lamps
- Easy Fuel® capless fuel filler
- Illuminated Entry System
- Manual-tilt/-telescoping steering column
- Particulate air filter
- Power door locks and windows with driver one-touch-down feature
- Steering wheel-mounted cruise and audio controls

**CONNECTIVITY & ENTERTAINMENT**

- AM/FM stereo with 6 speakers and MP3 capability
- SYNC Voice Recognition Communications and Entertainment System with 4.2" LCD screen in center stack, 911 Assist®, AppLink® and 2 smart-charging USB ports
- FordPass Connect<sup>4</sup> with 4G LTE Wi-Fi hotspot capability (enables FordPass™ app<sup>5</sup> features when activated)

**SAFETY & SECURITY**

- Personal Safety System™ for driver and front passenger includes dual-stage front airbags<sup>6</sup> safety belt pretensioners, safety belt energy-management retractors, safety belt usage sensors, driver's seat position sensor, crash severity sensor, restraint control module and Front-Passenger Sensing System
- Driver's knee airbag<sup>6</sup>
- Front-seat side airbags<sup>6</sup>
- Safety Canopy® System with side-curtain airbags<sup>6</sup> and rollover sensor
- Front height-adjustable shoulder safety belts
- MyKey® technology to help encourage responsible driving
- SecuriLock® Passive Anti-Theft System
- SOS Post-Crash Alert System™
- Tire Pressure Monitoring System (excludes spare)

**OPTIONS**

- Intelligent AWD System
- Remote Start System

**AVAILABLE OPTIONS FOR ALL MODELS**

- Cargo mat
- Easy Access Cargo Shade
- Engine block heater
- Front and rear floor liners
- Splash guards
- Wheel-locking lug nuts

**MAX. EXTERIOR DIMENSIONS**

- Wheelbase: **106.7"**
- Length: **180.5"**
- Height: **66.1"**
- Width – Excluding mirrors: **74.1"**
- Width – Including mirrors: **85.6"**



SE

- SYNC® 3 WITH 8" TOUCHSCREEN
- HEATED FRONT SEATS
- PUSH-BUTTON START

**Life is full of choices**, and Escape SE is a great one. With plenty of choices of its own. Start with front-wheel drive (FWD) or available Intelligent AWD on gas models. Or, enhance your power source with the option to plug in with the new Escape SE Plug-In Hybrid.<sup>1</sup> Add even more Ford Co-Pilot360™ Technology to your drive with available Ford Co-Pilot360 Assist, or choose the available power, panoramic Vista Roof.<sup>®</sup> These options join SE standards such as SiriusXM,<sup>®</sup> Intelligent Access with push-button start, and the SecuriCode™ invisible keypad. So many choices. That’s a great option to have.



**COLORS:** Desert Gold;<sup>2</sup> Velocity Blue;<sup>2</sup> Oxford White, Ingot Silver;<sup>2</sup> Dark Persian Green;<sup>2</sup> Magnetic;<sup>2</sup> Agate Black;<sup>2</sup> Sedona Orange;<sup>2</sup> Rapid Red MetallicTinted Clearcoat;<sup>3</sup> Star White MetallicTri-coat<sup>3</sup>



**1.5L ECOBOOST®**  
WITH AUTO START-STOP TECHNOLOGY  
8-SPEED AUTOMATIC TRANSMISSION  
STANDARD

**2.5L ATKINSON-CYCLE I-4 PLUG-IN HYBRID<sup>1</sup>**  
ELECTRONICALLY CONTROLLED CONTINUOUSLY  
VARIABLE TRANSMISSION (eCVT)  
OPTIONAL

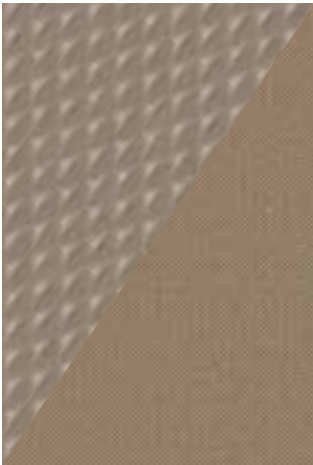
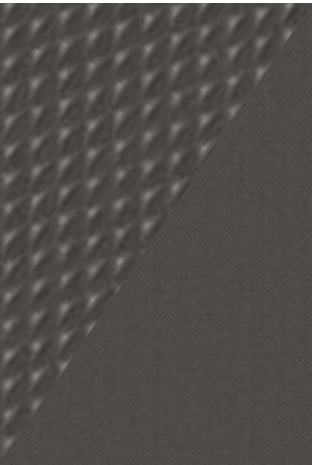
**SE INCLUDES SELECT S FEATURES, PLUS:**

**APPEARANCE**  
Body-color exterior door handles and power, heated sideview mirrors  
Chrome grille surround and upper window moldings  
Halogen projector-beam headlamps with LED signature lamps  
Privacy glass on all rear windows

**COMFORT & CONVENIENCE**  
10-way power driver’s seat with power lumbar and recline  
Electronic automatic temperature control  
Front-passenger seat back map pocket  
Heated front seats  
Illuminated visor mirrors  
Intelligent Access with push-button start  
Rear-seat center armrest with 2 cupholders  
SecuriCode invisible keypad

**CONNECTIVITY & ENTERTAINMENT**  
SiriusXM with 6-month All Access trial subscription<sup>4</sup>  
SYNC 3 with 8" LCD capacitive touchscreen in center stack, 911 Assist,<sup>®</sup> AppLink,<sup>®</sup> Apple CarPlay<sup>®</sup> compatibility, Android Auto™ compatibility, and 2 smart-charging USB ports

**OPTIONS**  
**Ford Co-Pilot360 Assist:**<sup>5</sup> Adaptive Cruise Control with Stop-and-Go, and Voice-Activated Touchscreen Navigation System with pinch-to-zoom capability (Includes Evasive Steering Assist, and SiriusXM Traffic and Travel Link<sup>®</sup> with 5-year subscription<sup>4</sup>)  
Intelligent AWD System (1.5L only)  
Power, panoramic Vista Roof (includes black roof-rack side rails)  
Remote Start System  
*Also see “Available Options for All Models” on the Escape S specifications page.*



**CLOTH SEATING SURFACES:** Dark Earth Gray, Sandstone



**17"**  
SHADOW SILVER-PAINTED ALUMINUM  
Standard with 1.5L EcoBoost



**18"**  
MACHINED ALUMINUM  
Standard with 2.5L Plug-In Hybrid<sup>1</sup>

**Available equipment shown.** <sup>1</sup>Coming Spring 2020. <sup>2</sup>Metallic. <sup>3</sup>Additional charge. <sup>4</sup>Certain restrictions, 3rd-party terms and data rates may apply. See footnote 1 on the “Your Tech, Your Way” pages, and your Ford Dealer for details. <sup>5</sup>Restrictions may apply. See your dealer for details.



# SE SPORT

12.3" INSTRUMENT CLUSTER  
LEATHER-WRAPPED STEERING WHEEL  
2.5L ATKINSON-CYCLE I-4 ENGINE

**Unplug and recharge** with the range-extending Escape SE Sport Hybrid. With an EPA-estimated AWD rating of 40 combined mpg,<sup>1</sup> getting from city to cabin will be a breeze. SE Sport casts a more rugged look with black exterior accents. Inside, enjoy a digital instrument cluster with customizable displays and 3D animation for each drive mode. A Pedestrian Alert Sounder will let others know this quiet hybrid is passing by. Add the SE Sport Premium Package with Ford Co-Pilot360™ Assist for a convenient power liftgate and inspiring power, panoramic Vista Roof.<sup>®</sup> Fewer stops. More adventure. Hit the road – and don't look back – in SE Sport Hybrid.



**COLORS:** Desert Gold;<sup>2</sup> Velocity Blue;<sup>2</sup> Oxford White, Ingot Silver;<sup>2</sup> Dark Persian Green;<sup>2</sup> Magnetic;<sup>2</sup> Agate Black;<sup>2</sup> Sedona Orange;<sup>2</sup> Rapid Red MetallicTinted Clearcoat;<sup>3</sup> Star White MetallicTri-coat<sup>3</sup>



**CLOTH SEATING SURFACES:** Sandstone, Dark Earth Gray (*Standard*)  
**ACTIVEV SEATING SURFACES:** Sandstone/Ebony, Ebony (*SE Sport Premium Package*)



**17"**  
EBONY BLACK-PAINTED ALUMINUM  
*Standard*



**19"**  
MACHINED-FACE ALUMINUM  
WITH EBONY-PAINTED POCKETS  
*Included with SE Sport Premium Package*

**2.5L ATKINSON-CYCLE I-4 HYBRID**  
ELECTRONICALLY CONTROLLED CONTINUOUSLY  
VARIABLE TRANSMISSION (eCVT)  
STANDARD

**SE SPORT INCLUDES SELECT SE FEATURES, PLUS:**

**MECHANICAL**

Electronic fuel door release  
Tire inflator and sealant kit

**APPEARANCE**

Black grille surround, sideview mirror caps  
and upper window moldings

**COMFORT & CONVENIENCE**

12.3" configurable LCD digital instrument cluster  
Leather-wrapped steering wheel

**SAFETY & SECURITY**

Pedestrian Alert Sounder

**OPTIONS**

**SE Sport Premium Package with Ford Co-Pilot360 Assist:**<sup>4</sup>  
19" machined-face aluminum wheels with Ebony-painted  
pockets and 225/55R19 all-season BSW tires; ActiveX seating  
material; power, panoramic Vista Roof (includes black roof-rack  
side rails); power liftgate; Remote Start System; and **Ford  
Co-Pilot360 Assist:** Adaptive Cruise Control with Stop-and-Go,  
and Voice-Activated Touchscreen Navigation System with  
pinch-to-zoom capability (includes Evasive Steering Assist, and  
SiriusXM<sup>®</sup> Traffic and Travel Link<sup>®</sup> with 5-year subscription<sup>5</sup>)

Front and rear floor liners  
Intelligent AWD System  
Mini spare wheel and tire

*Also see “Available Options for All Models” on the Escape S  
specifications page.*

**Available equipment shown.** <sup>1</sup>Actual mileage will vary. Escape 2.5L Hybrid AWD. EPA-estimated ratings of 43 city/37 hwy/40 combined mpg. <sup>2</sup>Metallic. <sup>3</sup>Additional charge. <sup>4</sup>Restrictions may apply. See your dealer for details. <sup>5</sup>Certain restrictions, 3rd-party terms and data rates may apply. See footnote 1 on the “YourTech, Your Way” pages, and your Ford Dealer for details.



# SEL

- HANDS-FREE, FOOT-ACTIVATED LIFTGATE
- ACTIVEX SEATING MATERIAL
- REVERSE SENSING SYSTEM

If your tastes reveal a sophisticated nature, Escape SEL will more than satisfy. Choose from a plug-in hybrid,<sup>1</sup> or 1 of 2 gas powertrains – including an available 250-hp<sup>2</sup> 2.0L EcoBoost® engine teamed with Intelligent AWD and steering wheel-mounted paddle shifters. So you’re free to move the way you choose. Fog lamps and 18" aluminum wheels with painted pockets adorn the exterior. Inside, new contoured front bucket seats feature durable, high-end synthetic ActiveX seating material. Remotely start SEL, and even your leather-wrapped, heated steering wheel can be ready for adventure.



**COLORS:** Desert Gold;<sup>3</sup> Velocity Blue;<sup>3</sup> Ingot Silver;<sup>3</sup> Dark Persian Green;<sup>3</sup> Magnetic;<sup>3</sup> Agate Black;<sup>3</sup> Sedona Orange;<sup>3</sup> Rapid Red MetallicTinted Clearcoat;<sup>4</sup> Star White MetallicTri-coat<sup>4</sup>



**1.5L ECOBOOST**  
WITH AUTO START-STOP TECHNOLOGY  
8-SPEED AUTOMATIC TRANSMISSION  
STANDARD

**2.0L ECOBOOST**  
WITH AUTO START-STOP TECHNOLOGY  
8-SPEED SELECTSHIFT® AUTOMATIC TRANSMISSION  
WITH PADDLE SHIFTERS  
OPTIONAL; REQUIRES AWD AND FORD CO-PILOT360™ ASSIST

**2.5L ATKINSON-CYCLE I-4 PLUG-IN HYBRID<sup>1</sup>**  
ELECTRONICALLY CONTROLLED CONTINUOUSLY  
VARIABLE TRANSMISSION (eCVT)  
OPTIONAL

## SEL INCLUDES SELECT SE FEATURES, PLUS:

**MECHANICAL**  
Class II Trailer Tow Package (2.0L EcoBoost only)

**FORD CO-PILOT360 TECHNOLOGY**  
Reverse Sensing System

**APPEARANCE**  
Black roof-rack side rails  
Fog lamps

**COMFORT & CONVENIENCE**  
Hands-free, foot-activated liftgate  
Leather-wrapped, heated steering wheel  
Memory feature for power driver’s seat and sideview mirrors  
Power windows with one-touch-up/-down feature  
Remote Start System

**OPTIONS**  
**Ford Co-Pilot360 Assist:** Adaptive Cruise Control with Stop-and-Go, and Voice-Activated Touchscreen Navigation System with pinch-to-zoom capability (includes Evasive Steering Assist, and SiriusXM® Traffic and Travel Link® with 5-year subscription<sup>5</sup>)  
Intelligent AWD System (n/a on Plug-In Hybrid<sup>1</sup>)  
Power, panoramic Vista Roof®  
Roof-rail crossbars (n/a with power, panoramic Vista Roof)  
*Also see “Available Options for All Models” on the Escape S specifications page.*



**18"**  
MACHINED-FACE ALUMINUM  
WITH DARK STAINLESS-PAINTED POCKETS  
*Standard with EcoBoost engines*



**18"**  
MACHINED-FACE ALUMINUM  
WITH EBONY-PAINTED POCKETS  
*Optional with 2.0L EcoBoost engine*



**18"**  
MACHINED ALUMINUM  
*Standard with 2.5L Plug-In Hybrid<sup>1</sup>*



**ACTIVEX SEATING SURFACES:** Sandstone/Ebony, Ebony

**Available equipment shown.** <sup>1</sup>Coming Spring 2020. <sup>2</sup>Horsepower and torque ratings based on premium fuel per SAE J1349® standard. Your results may vary. <sup>3</sup>Metallic. <sup>4</sup>Additional charge. <sup>5</sup>Certain restrictions, 3rd-party terms and data rates may apply. See footnote 1 on the “Your Tech, Your Way” pages, and your Ford Dealer for details.



# TITANIUM

B&O SOUND SYSTEM WITH 10 SPEAKERS

FORD CO-PILOT360™ ASSIST+

ACTIVE PARK ASSIST 2.0

**Your sanctuary from today’s hectic world,** the leather-trimmed refinement of Escape Titanium is a calming oasis. A 12.3" digital instrument cluster with customizable display, and dual-zone climate control, keep you comfortably in command, no matter which of its 3 powertrains you choose. Ambient lighting in 7 hues and a B&O Sound System with 10 speakers help you establish the mood along the way. Adding to its allure: a head-up display,<sup>1</sup> Active Park Assist 2.0, and 19" aluminum wheels.<sup>2</sup> Plan your escape in the well-equipped Titanium.



**COLORS:** Desert Gold;<sup>3</sup> Velocity Blue;<sup>3</sup> Ingot Silver;<sup>3</sup> Dark Persian Green;<sup>3</sup> Magnetic;<sup>3</sup> Agate Black;<sup>3</sup> Sedona Orange;<sup>3</sup> Rapid Red MetallicTinted Clearcoat;<sup>4</sup> Star White MetallicTri-coat<sup>4</sup>



**LEATHER-TRIMMED SEATING SURFACES:** Sandstone/Ebony, Ebony

## 2.5L ATKINSON-CYCLE I-4 HYBRID

ELECTRONICALLY CONTROLLED CONTINUOUSLY VARIABLE TRANSMISSION (eCVT)  
STANDARD

## 2.5L ATKINSON-CYCLE I-4 PLUG-IN HYBRID<sup>5</sup>

ELECTRONICALLY CONTROLLED CONTINUOUSLY VARIABLE TRANSMISSION (eCVT)  
STANDARD

## 2.0L ECOBOOST®

WITH AUTO START-STOP TECHNOLOGY  
8-SPEED SELECTSHIFT® AUTOMATIC TRANSMISSION  
OPTIONAL; REQUIRES AWD

### TITANIUM INCLUDES SELECT SEL FEATURES, PLUS:

#### MECHANICAL

Class II Trailer Tow Package (2.0L EcoBoost only)

#### FORD CO-PILOT360 TECHNOLOGY

Active Park Assist 2.0 with Parallel Parking, Park Out Assist, Reverse Perpendicular Parking, and Forward and Side Sensing Systems

Ford Co-Pilot360 Assist+<sup>®</sup> Adaptive Cruise Control with Stop-and-Go and Lane Centering, and Voice-Activated Touchscreen Navigation System with pinch-to-zoom capability (includes Evasive Steering Assist, and SiriusXM® Traffic and Travel Link® with 5-year subscription<sup>7</sup>)

Rain-Sensing Windshield Wipers

#### APPEARANCE

Body-color, power sideview mirrors with integrated turn signal indicators and security approach lamps

LED headlamps and fog lamps

#### COMFORT & CONVENIENCE

6-way power front-passenger seat

12V powerpoints (2)

12.3" configurable LCD digital instrument cluster

110V/150W AC power outlet

Ambient lighting

Auto-dimming rearview mirror

Dual-zone electronic automatic temperature control

Heated steering wheel

Perimeter alarm

Universal garage door opener

#### CONNECTIVITY & ENTERTAINMENT

B&O Sound System with 10 speakers including a subwoofer, and HD Radio™ Technology

#### OPTIONS

**Premium Package:** head-up display and power, panoramic Vista Roof®

Intelligent AWD System (n/a on Plug-In Hybrid<sup>5</sup>)

Power, panoramic Vista Roof (n/a as individual option on Plug-In Hybrid;<sup>9</sup> available as part of Premium Package)

Roof-rail crossbars (n/a with power, panoramic Vista Roof)

Also see “Available Options for All Models” on the Escape S specifications page.



**19"**  
MACHINED-FACE ALUMINUM  
WITH DARKTARNISH-PAINTED POCKETS  
Standard with 2.0L EcoBoost engine  
and 2.5L Hybrid



**18"**  
MACHINED ALUMINUM  
Standard with 2.5L Plug-In Hybrid<sup>5</sup>

**Available equipment shown.** <sup>1</sup>Don't drive while distracted. See owner's manual for details and system limitations. <sup>2</sup>Gas-only models. <sup>3</sup>Metallic. <sup>4</sup>Additional charge. <sup>5</sup>Coming Spring 2020. <sup>6</sup>Restrictions may apply. See dealer for details. <sup>7</sup>Certain restrictions, 3rd-party terms and data rates may apply. See footnote 1 on the “Your Tech, Your Way” pages, and your Ford Dealer for details.





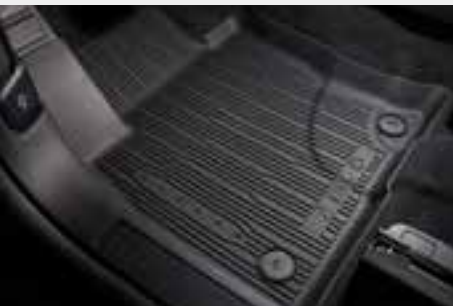
Titanium in Oxford White accessorized with molded splash guards, roof crossbars, and cargo box by Yakima®<sup>1</sup>



Roof-mounted Cargo Basket by Yakima<sup>1</sup>



Cargo area protector



Floor liners



Dash cam systems<sup>2</sup>

SHOP THE COMPLETE COLLECTION | [accessories.ford.com](https://accessories.ford.com)

<sup>1</sup>Consult owner's manual for details on roof-rack load limits. <sup>2</sup>Ford Licensed Accessory.

**New Vehicle Limited Warranty.** We want your Ford Escape ownership experience to be the best it can be. Under this warranty, your new vehicle comes with 3-year/36,000-mile bumper-to-bumper coverage, 5-year/60,000-mile Powertrain Warranty coverage, 5-year/60,000-mile safety restraint coverage, and 5-year/unlimited-mile corrosion perforation (aluminum panels do not require perforation) coverage – all with no deductible. Escape unique electric components are covered during the Hybrid/Electric Unique Component Coverage, which lasts for 8 years or 100,000 miles, whichever occurs first. Please ask your Ford Dealer for a copy of these limited warranties.

**Roadside Assistance.** Covers your vehicle for 5 years or 60,000 miles, so you have the security of knowing that help may be only a phone call away should you run out of fuel, lock yourself out of the vehicle or need a winch back to a paved road, a battery jump start or towing. Your Ford Dealer can provide complete details on all of these advantages.

**Ford Credit.** Get the ride you want. Whether you plan to lease or buy, Ford Credit has the option that's right for you. Ask your Ford Dealer for details or visit us online at [ford.com/finance](https://ford.com/finance).

**Ford Protect™ Extended Service Plans.** Whether you purchase or lease your Ford vehicle, insist on genuine Ford Protect extended service plans. Ford Protect has a variety of plans to give you peace-of-mind protection whether you want vehicle component or maintenance coverage. Plus, they are fully backed by Ford and honored at all Ford dealerships in the U.S., Canada and Mexico. When you visit your dealer, insist on genuine Ford Protect extended service plans.

**Ford Insure.** A new insurance product designed just for Ford owners, Ford Insure can help you save money on auto insurance for your connected Ford vehicle. Drive smarter, become an even better driver and earn bigger discounts – it's a win/win/win. Visit the FordPass mobile app or call 1-833-Ford-183.

*American Road Services Company LLC is the licensed insurance agency supporting Ford and Lincoln insurance programs. Ford Insure is underwritten by Nationwide Mutual Insurance Company and Affiliated Companies. Subject to underwriting guidelines, review, and approval. Products not available to all persons in all states. Coverages vary by state. Availability varies; program criteria differs in California.*

**Ford Original Accessories.** They're warranted for whichever provides you the greatest benefit: 24 months/unlimited mileage, or the remainder of your Bumper-to-Bumper 3-year/36,000-mile New Vehicle Limited Warranty.

**Ford Licensed Accessories (FLA)** are warranted by the accessory manufacturer's warranty. FLA are designed and developed by the accessory manufacturer and have not been designed or tested to Ford Motor Company engineering requirements. Contact your Ford Dealer for details and/or a copy of all limited warranties.

Amazon, Alexa and all related logos are trademarks of Amazon.com, Inc. or its affiliates. Apple, Apple CarPlay, Apple Watch and iPhone are trademarks of Apple Inc., registered in the U.S. and other countries. App Store is a service mark of Apple Inc. BANG & OLUFSEN and B&O are registered trademarks of Bang & Olufsen Group. Licensed by Harman Becker Automotive Systems Manufacturing Kft. All rights reserved. Google, Android, Google Play, Android Auto, Waze and other marks are trademarks of Google LLC. Requires the Android Auto app on Google Play and an Android compatible smartphone running Android™ 5.0 or higher. HD Radio is a proprietary trademark of iBiquity Digital Corporation. SiriusXM and all related marks and logos are trademarks of Sirius XM Radio Inc. Yakima is a registered trademark of Yakima Products Inc.

Comparisons based on competitive models excluding other Ford vehicles (Escape class is Small Utilities; Escape Hybrid class is Small Utilities – Hybrid; Escape Plug-In Hybrid class is Small Utilities – Plug-In Hybrid; each based on Ford segmentation), publicly available information and Ford certification data at time of release. Vehicles may be shown with optional equipment and without standard antenna. Features may be offered only in combination with other options or subject to additional ordering requirements/limitations. Dimensions shown may vary due to optional features and/or production variability. Information is provided on an “as is” basis and could include technical, typographical or other errors. Ford makes no warranties, representations, or guarantees of any kind, express or implied, including but not limited to, accuracy, currency, or completeness, the operation of the information, materials, content, availability, and products. Ford reserves the right to change product specifications, pricing and equipment at any time without incurring obligations. Your Ford Dealer is the best source of the most up-to-date information on Ford vehicles. Colors are representative only. See your dealer for actual paint/trim options.



**BUILT TO KEEP YOU MOVING.™**  
The FordPass™ App<sup>3</sup> puts your Escape owner experience right in the palm of your hand.



#### COMPLIMENTARY MAINTENANCE

With FordPass Rewards™, you can earn 42,000 Points to use toward complimentary maintenance when you buy or lease a new Ford.<sup>4</sup> Or save your Points for future service, accessories or even your next new vehicle purchase. And when it's time to schedule service, you can do it right from your FordPass App.



#### REWARDS

In addition to complimentary maintenance, you can easily earn FordPass Rewards Points for many of the things you already do with us, including service and maintenance at participating dealers. Then you can redeem your Points for discounts on service, parts, accessories and new vehicle purchases. Use your app to watch your Points grow and keep track of how you use them.



#### ROADSIDE ASSISTANCE

With the FordPass App, you can request roadside assistance like fuel delivery, flat-tire repair and more 24/7 anywhere, anytime.<sup>5</sup> Just use your app to call or make an e-request and help is on the way.



#### CONNECT & CONTROL

Stay connected and in control of your vehicle with complimentary remote features accessed through the FordPass App. Start, stop, lock and unlock your vehicle, schedule a start, even check fuel and fluid levels right from the app.<sup>6</sup> You can also get vehicle health alerts, service history and service alerts to help you keep on top of your vehicle's maintenance.



Download the FordPass app today.

<sup>3</sup>FordPass App, compatible with select smartphone platforms, is available via a download. Message and data rates may apply. <sup>4</sup>75,000 points for Diesel owners. Modem must be activated within 60 days of purchase through the FordPass App on a smartphone and remain active for at least 6 months after activation. Buyers of non-modem-equipped vehicles will also receive Points for complimentary maintenance after enrollment. Visit a participating dealer for details. <sup>5</sup>Roadside assistance is included for certain owners and available to everyone for a per-service fee. <sup>6</sup>FordPass Connect™ (optional on select vehicles), the FordPass App, and complimentary Connected Service are required for remote features (see FordPass Terms for details). Connected service and features depend on compatible AT&T network availability. Evolving technology/cellular networks/vehicle capability may limit functionality and prevent operation of connected features. Connected service excludes Wi-Fi hotspot.





From day one, we had the future in mind. And for over 116 years,  
we've focused on improving your freedom of movement,  
by making it possible for hardworking, everyday people to own  
a vehicle. One that's well built. That you're proud to drive.  
Born in Detroit, made in America<sup>1</sup> and famous worldwide:  
We are the Ford Motor Company.

Your mobility is at the center of everything we do.  
And we're excited to be designing and building smart vehicles  
that work for you. It's why we put our family name on every one.  
From our founding members, to our Ford family of employees  
around the globe, we work with pride. We build with care.  
For you – and your family. By everyone in ours.

<sup>1</sup>Made in the USA with domestic and foreign parts.