

THE 2020

# ESCALADE

A CLOSER LOOK



*Cadillac*



# COMFORT TO SPARE

The cut-and-sewn interior of the Escalade combines authentic materials and sumptuous leathers with plenty of space for all. Modern amenities deliver the highest quality of comfort and convenience, every ride.



## HANDCRAFTED MATERIALS

---

Every detail attended to – our designers and craftsmen have curated the finest natural materials, including authentic wood trims and leather appointments.



## 16-SPEAKER BOSE® CENTERPOINT® SYSTEM

---

The Bose Centerpoint® Surround Sound system features 16 speakers and makes every ride a captivating auditory experience.



## ENTERTAIN ON THE ROAD

---

Second- and third-row passengers can enjoy the available Rear Seat Entertainment System.



# POWERFUL AND IMPOSSIBLE TO IGNORE

With striking details and eye-catching lines, the 2020 Escalade is a study in artistic expression. Its modern, streamlined shape features beveled bodyside molding, an advanced jewel-like lighting system and aggressive wheel designs. It's an SUV that makes a statement wherever it goes.



## CUTTING-EDGE ILLUMINATION

---

Full LED Light Blade taillamps emit thin blades of light that give the Escalade an unmistakable signature at night.



## AVAILABLE POWER ASSIST STEPS

---

Open one of the doors and the available power assist steps lower to greet you.



## HANDS-FREE LIFTGATE

---

The hands-free liftgate opens and closes with a simple kicking gesture, which is especially helpful if your hands are full.



# SURROUNDED BY AVAILABLE SAFETY AND DRIVER-ASSISTANCE TECHNOLOGY

Strength where it belongs. With a safety cage constructed from ultra-high-strength steel alloy and strategic crumple zones, the Escalade offers a solid foundation. High-tech features utilize cameras and sensors to support that foundation, offering you increased peace of mind.



## STANDARD FEATURES

---

- AUTOMATIC PARKING ASSIST
- FRONT AND REAR PARK ASSIST
- SURROUND VISION
- STABILITRAK ELECTRONIC STABILITY CONTROL SYSTEM WITH TRACTION CONTROL
- HILL START ASSIST
- SEVEN AIRBAGS<sup>1</sup>
- FRONT OUTBOARD PASSENGER SENSING SYSTEM FOR FRONTAL OUTBOARD PASSENGER AIRBAG
- ONSTAR® AND CADILLAC CONNECTED SERVICES-CAPABLE
- SEAT BELTS, ALL SEATING POSITIONS
- REAR CHILD SECURITY DOOR LOCKS
- TEEN DRIVER
- TIRE PRESSURE MONITORING SYSTEM (DOES NOT APPLY TO SPARE TIRE)
- TIRE FILL ALERT

---

<sup>1</sup>Always use seat belts and child restraints. Children are safer when properly secured in a rear seat in the appropriate child restraint. See the Owner's Manual for more information.

Read the vehicle's [Owner's Manual](#) for important feature limitations and information.

## AVAILABLE FEATURES

---

- AUTOMATIC EMERGENCY BRAKING
- ADAPTIVE CRUISE CONTROL—ADVANCED
- AUTOMATIC SEAT BELT TIGHTENING
- ENHANCED AUTOMATIC EMERGENCY BRAKING
- FORWARD COLLISION ALERT
- HIGHWAY SAFETY KIT
- INTELLIBEAM HEADLAMPS
- LANE CHANGE ALERT WITH SIDE BLIND ZONE ALERT
- LANE KEEP ASSIST WITH LANE DEPARTURE WARNING
- REAR CAMERA MIRROR WITH WASHER
- REAR CROSS TRAFFIC ALERT
- REVERSE AUTOMATIC BRAKING
- PATENTED SAFETY ALERT SEAT

## SURROUND VISION

Surround Vision<sup>1</sup> provides a bird's-eye view of the area immediately surrounding the vehicle when in low-speed Drive or Reverse. This view, projected onto the Cadillac user experience<sup>2</sup> screen, helps increase your awareness when parking.

<sup>1</sup>Functionality varies by model. Full functionality requires compatible Bluetooth<sup>®</sup> and smartphone, and USB connectivity for some devices.



## REAR CAMERA MIRROR

The available Rear Camera Mirror<sup>1</sup> streams rear-facing video that provides a wider, less-obstructed field of view than a traditional rearview mirror.



## LANE CHANGE ALERT WITH SIDE BLIND ZONE ALERT

Available Lane Change Alert with Side Blind Zone Alert<sup>1</sup> can provide you alerts when a moving vehicle is detected rapidly approaching or is already in your side blind zone.



<sup>1</sup>Safety or driver assistance features are no substitute for the driver's responsibility to operate the vehicle in a safe manner. The driver should remain attentive to traffic, surroundings and road conditions at all times. Visibility, weather, and road conditions may affect feature performance. Read the vehicle's [Owner's Manual](#) for more important feature limitations and information.



# STRONG LINES. POWERFUL PERFORMANCE.

The 420 hp<sup>1</sup> 6.2L V8 engine offers technologies such as Continuously Variable Valve Timing, Direct Injection and Active Fuel Management to ensure power is harnessed efficiently.



<sup>1</sup>Cadillac estimated horsepower and torque pending SAE certification.

## FOUR-WHEEL DRIVE

Get power where you need it most. Effortlessly shift among 2WD, 4WD HI, 4WD LOW and AUTO to manage the road ahead.



## MAGNETIC RIDE CONTROL SUSPENSION

Feel that? We didn't think so. The available Magnetic Ride Control reads the road 1000 times a second to make your drive responsive and smooth.



## READY FOR THE LONG HAUL

Pull your own weight, and then some. The standard Trailering Package provides a staggering 8300-lb trailering capacity.<sup>1</sup>

<sup>1</sup>Before you buy a vehicle or use it for trailering, carefully review the trailering section of the Owner's Manual. The weight of passengers, cargo and options or accessories may reduce the amount you can tow.



# CONNECT EVERY JOURNEY

The Escalade cabin holds a collection of high-tech features that are both practical and indulgent. With the Cadillac user experience<sup>1</sup> at your command, entertainment systems and available Wi-Fi<sup>2</sup> for rear passengers, you can stay connected wherever the road takes you.



<sup>1</sup>Functionality varies by model. Full functionality requires compatible Bluetooth and smartphone, and USB connectivity for some devices.

<sup>2</sup>Service varies with conditions and location. Requires active OnStar service and paid AT&T® data plan. Visit [onstar.com](http://onstar.com) for details and limitations.

## CADILLAC WI-FI READY

The available 4G LTE Wi-Fi Hotspot<sup>1</sup> allows you to connect up to seven devices at the same time, up to 50 away, so your passengers can check their email or watch their favorite entertainment.



<sup>1</sup>Service varies with conditions and location. Requires active OnStar service and paid AT&T data plan. Visit [onstar.com](http://onstar.com) for details and limitations. The vehicle must be on or Retained Accessory Power must be active.

## APPLE CARPLAY™

With Apple CarPlay,<sup>2</sup> compatibility, you can access Siri,<sup>®</sup> Apple Music™, contacts and more from your iPhone<sup>®</sup> with a touch of the vehicle screen.



<sup>2</sup>Vehicle user interface is a product of Apple<sup>®</sup> and its terms and privacy statements apply. Requires compatible iPhone and data plan rates apply. Apple CarPlay is a trademark of Apple Inc. Siri, iPhone and Apple Music are trademarks for Apple Inc, registered in the U.S. and other countries.

## CADILLAC USER EXPERIENCE<sup>3</sup>

Connects you with the world around you to make driving enjoyable and connected.



<sup>3</sup>Functionality varies by model. Full functionality requires compatible Bluetooth and smartphone, and USB connectivity for some devices.

# SPECS

## ESCALADE



## ESCALADE ESV



- Max 94.2 cubic feet of cargo space<sup>1</sup>
- 8300 lbs max towing capacity<sup>2</sup> on 2WD models
- Fuel capacity 26 gallons (approx.)

- Max 120.9 cubic feet of cargo space<sup>1</sup>
- 8100 lbs towing capacity<sup>2</sup> on 2WD models
- Fuel capacity 31 gallons (approx.)

<sup>1</sup>With rear seats folded down, cargo and load capacity limited by weight and distribution.

<sup>2</sup>Before you buy a vehicle or use it for trailering, carefully review the trailering section of the Owner's Manual. The weight of passengers, cargo and options or accessories may reduce the amount you can tow.

# TRIMS

---

## ESCALADE

Standard features:



- 6.2L V8 with 420 hp and 460 lb-ft of torque<sup>1</sup>
- Magnetic Ride Control
- Cadillac user experience<sup>2</sup>
- Automatic Parking Assist<sup>3</sup>
- Surround Vision<sup>3</sup>

<sup>1</sup>Cadillac estimated horsepower and torque pending SAE certification.

<sup>2</sup>Functionality varies by model. Full functionality requires compatible Bluetooth and smartphone, and USB connectivity for some devices.

<sup>3</sup>Read the vehicle Owner's Manual for important feature limitations and information.

## LUXURY

Includes Standard features, plus:



- Driver Awareness Package<sup>3</sup>
- Rear Camera Mirror<sup>3</sup>
- Color Head-Up Display (HUD)
- 22" 7-spoke premium painted wheels with chrome inserts
- Available Sport Edition

## TRIMS – CONTINUED

---

### **PREMIUM LUXURY**

Includes Luxury features, plus:



- Driver Assist Package<sup>1</sup>
- Front LED cornering lamps
- Rear Seat Entertainment System
- Illuminating Door Handles
- Available Sport Edition

<sup>1</sup>Read the vehicle Owner's Manual for important feature limitations and information.

### **PLATINUM**

Includes Premium Luxury features, plus:



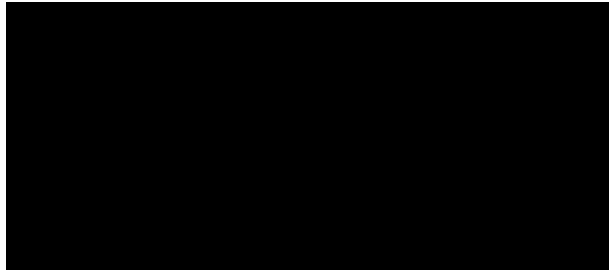
- Leather-wrapped instrument panel, console and upper door trim
- Premium Semi-Aniline Leather seating surfaces, first and second rows
- 18-way adjustable seats for driver and front passenger with massage
- Power-retractable assist steps
- Platinum grille and wheel designs
- Available Sport Edition

# EXTERIOR COLORS

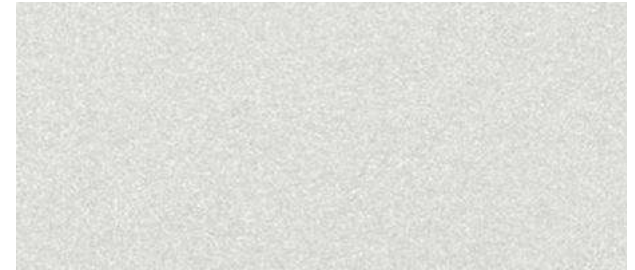
---



RADIANT SILVER METALLIC



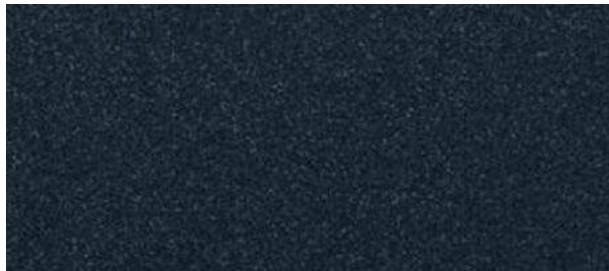
BLACK RAVEN



CRYSTAL WHITE TRICOAT<sup>1</sup>



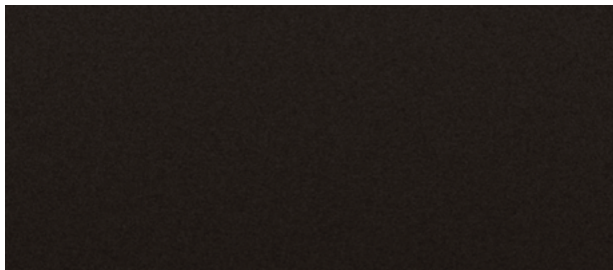
RED PASSION TINTCOAT<sup>1</sup>



SHADOW METALLIC<sup>1</sup>



SATIN STEEL METALLIC<sup>1</sup>



DARK MOCHA METALLIC<sup>1</sup>



DARK ADRIATIC BLUE METALLIC<sup>1</sup>



# ESCALADE SPORT EDITION

The Sport Edition is available on Luxury, Premium Luxury and Platinum trim levels. Black-out your Escalade with a high-gloss black grille, lower fascia, window and bodyside moldings and Midnight Silver 22-inch wheels. Select Black Raven paint to put the finishing touch on this midnight thematic.



# INTERIOR COLORS

---



## JET BLACK

Leather Seating Surfaces with Mini-Perforated Inserts

---

Available on Escalade, Luxury and Premium Luxury.



## SHALE

Leather Seating Surfaces with Jet Black accents and Mini-Perforated Inserts

---

Available on Escalade, Luxury and Premium Luxury.



## KONA BROWN

Leather Seating Surfaces with Mini-Perforated Inserts

---

Available at extra charge on Luxury and Premium Luxury.



## JET BLACK

Semi-Aniline Leather Seating Surfaces with Jet Black accents and Mini-Perforated Inserts

---

Available on Platinum.



## MAPLE SUGAR

Semi-Aniline Leather Seating Surfaces with Jet Black accents and Mini-Perforated Inserts

---

Available on Platinum.

# WHEELS



20" Dual 7-spoke alloy wheels with Chrome finish

Standard on Escalade.



22" 7-spoke alloy wheels with Chrome inserts/Pearl Nickel finish

Standard on Luxury and Premium Luxury.



22" Dual 7-spoke alloy wheels with Ultra Bright Machined/Midnight Silver finish

Available on Luxury and Premium Luxury.



22" Split 6-spoke alloy wheels with Chrome finish

Available on Luxury, Premium Luxury and Platinum.



22" 12-spoke alloy wheels with Polished finish

Available on Luxury, Premium Luxury and Platinum.



22" 6-spoke alloy wheels with Chrome finish

Available on Luxury, Premium Luxury and Platinum.



22" 12-spoke alloy wheels with Midnight Silver finish

Available on Luxury, Premium Luxury and Platinum.



22" 5-spoke alloy wheels with Ultra Bright Machined/High-Gloss Black finish<sup>1</sup>

Available on Escalade, Luxury, Premium Luxury and Platinum.



22" 6-spoke alloy wheels with High-Gloss Black finish<sup>1</sup>

Available on Escalade, Luxury, Premium Luxury and Platinum.

<sup>1</sup>Shown with available dealer installed accessories. Use only GM-approved tire and wheel combinations. See <https://accessories.cadillac.com/> for important wheel and tire information, or see your dealer.

# WHEELS - CONTINUED

---



22" Split 6-spoke alloy wheels with Ultra Bright Machined/Manoogian Silver finish<sup>1</sup>

---

Available on Escalade, Luxury, Premium Luxury and Platinum.



22" 7-spoke alloy wheels with Silver finish<sup>1</sup>

---

Available on Escalade, Luxury, Premium Luxury and Platinum.



22" Split 7-spoke alloy wheels with Chrome finish<sup>1</sup>

---

Available on Escalade, Luxury, Premium Luxury and Platinum.



22" 7-spoke black-painted wheels with chrome inserts

---

Available on Escalade, Luxury, Premium Luxury and Platinum.



22" Dual 9-spoke alloy wheels with Chrome inserts/Ultra Silver metallic finish

---

Standard on Platinum.

<sup>1</sup>Shown with available dealer installed accessories. Use only GM-approved tire and wheel combinations. See <https://accessories.cadillac.com/> for important wheel and tire information, or see your dealer.